

State Street Global Equity Diversified Index Fund

Supplement No. 17

(A Sub-Fund of State Street ICAV (the “Fund”), an Irish collective asset-management vehicle constituted as an umbrella fund with segregated liability between Sub-Funds authorised by the Central Bank of Ireland pursuant to the Act and the UCITS Regulations).

This Supplement (the “Supplement”) forms part of the Prospectus dated 24 September 2025 as amended from time to time (the “Prospectus”) in relation to the Fund. This Supplement should be read together with the Prospectus and Packaged Retail and Insurance-based Investment Product document (“PRIIPs KID”) or Key Investor Information Document (“KIID”). It contains information relating to the Sub-Fund and its available Share Classes.

Unless otherwise defined herein or unless the context otherwise requires, all defined terms used in this Supplement shall bear the same meaning as in the Prospectus.

Prospective investors should review the entire Supplement, the Prospectus and PRIIPs KID or KIID carefully. If you have any questions, you should consult your stockbroker and / or financial adviser. Potential investors should consider the risk factors set out in the Prospectus and in this Supplement before investing in this Sub-Fund. The Fund and the Directors listed in the “Management” section of the Prospectus, accept responsibility for the information contained in this Supplement.

State Street Global Equity Diversified Index Fund

Sub-Fund Characteristics

Base Currency	USD
Business Day	Any day on which banks are open for business in the United Kingdom and the United States (excluding Saturday, Sunday and public holidays).
Dealing Day	Each Business Day on which the stock exchanges or other markets which represent the basis for valuation of a major part of the net assets of the Sub-Fund are open, as determined by the Fund. The Sub-Fund will have at least one Dealing Day per fortnight.
Investment Manager	State Street Global Advisors Europe Limited
Sub-Investment Manager	State Street Global Advisors Limited
Dividend Policy	For distributing Share Classes, semi-annual distribution of income (in or around January and July), except where the Management Company / Investment Manager in its sole discretion, determines not to pay a dividend on any given distribution date. For accumulating Share Classes, all income and gains will be accumulated in the Net Asset Value per Share.
Pricing Adjustment	The Sub-Fund will implement a Swing Pricing Adjustment.
SFDR Fund Classification	Sustainability Risk integrated by the Index / Article 8

Dealing Information

Dealing Deadline	For all subscriptions, conversions and redemptions: 10.00 a.m. (Irish time) on the Business Day before the Dealing Day.
Settlement Deadline	The second Business Day after the Dealing Day, or such later or earlier date as may be determined by the Management Company and notified to Shareholders, provided that in the case of redemptions, such date will not exceed 14 calendar days from the Dealing Deadline.
Dealing NAV	The Net Asset Value per Share calculated as at the Valuation Point on the relevant Dealing Day.
Valuation Point	10.15 p.m. (Irish time) on each Business Day.
Valuation Pricing Used	Closing prices

Index Information

Index	WTW Global Equity Diversified Index on MSCI ACWI* https://www.msci.com/documents/10199/d27ddb2f-db4b-bd4e-3a3c-d0987ac8672b https://www.msci.com/constituents
Index Rebalance Frequency	Quarterly
Additional Index Information	Further details of the Index and its performance can be found at: www.msci.com/documents/10199/d27ddb2f-db4b-bd4e-3a3c-d0987ac8672b * * A custom index built by MSCI using criteria set out by WTW

Investment Objective and Policy

Investment Objective: The investment objective of the Sub-Fund is to track the performance of developed and emerging equity markets.

Investment Policy. The investment policy of the Sub-Fund is to track the performance of the Index (or any other index determined by the Directors from time to time to track substantially the same market as the Index) as closely as possible while seeking to minimise as far as possible the tracking difference between the Sub-Fund's performance and that of the Index.

The Index is constructed by selecting constituents from its corresponding parent index i.e. MSCI ACWI (All Country World Index) (the "Parent Index") using an optimization process that aims to: reduce the weighted average greenhouse gas emissions intensity by 50%, compared to the Parent Index, reduce the weighted average greenhouse gas emissions (GHG) intensity by 10% on an annualized basis, reduce the weighted average WTW Climate Transition Value-at-Risk ("CTVaR") (which is calculated by Willis Limited ("Willis") and is a measure of the risk of a reduction in an asset's value due to the global transition to net-zero emissions) of the Index to 75% of CTVaR of the Parent Index. The Index will use three custom factors as part of the optimisation, Value, Quality, and Momentum (as defined below), while seeking to minimise the tracking error compared to the Parent Index Factor.

Value	<ul style="list-style-type: none"> • Book-to-Price: Identifies if a stock is reasonably priced. • Earnings-to-Price: Identifies the earnings potential of a stock. • Cash-Earnings-to-Price: Identifies the company's ability to generate cash flows. • Sales-to-Price: Identifies the company's ability to generate revenue. • EBIT-to-Enterprise Value: Identifies if a company's earnings are strong relative to its market value. • Dividend Yield: Identifies how much a company pays in dividends compared to its stock price.
Quality	<ul style="list-style-type: none"> • Profitability: The ability of a company to generate earnings relative to its expenses. • Investment Quality: Internal growth rate.

	<ul style="list-style-type: none"> • Earnings Quality: The reliability and sustainability of a company's earnings.
Momentum	<ul style="list-style-type: none"> • Residual Momentum: The tendency of the stock to remain consistent beyond the market. • Residual Momentum T-Stat: The difference between the stock's consistency and that of the market.

The Parent Index measures the performance of large and mid capitalisation stocks across a number of global equity markets, covering equity securities from both developed and emerging markets.

The Index methodology excludes companies involved in controversial weapons businesses, very severe ESG controversies (red flag), companies assessed as having misalignment with the United Nations Global Compact Principles, tobacco, thermal coal mining, thermal coal power and oil sands. The adoption of these screens within the Index correspond to the environmental and social factors which the Sub-Fund promotes, as further described in the "**ESG Screening**" subsection of the "**ESG Investing**" section of the Prospectus. Companies deemed by the Index provider to be compliant with the United Nations Global Compact are considered to exhibit good governance. The Index also seeks an ESG Score similar to the Parent Index, as calculated by the Index provider.

The Investment Manager and / or Sub-Investment Manager, on behalf of the Sub-Fund, will invest using the replication strategy as further described in the "**Investment Objectives and Policies**" section of the Prospectus, primarily in the securities of the Index, at all times in accordance with the investment restrictions set forth in the Prospectus. The Investment Manager and / or Sub-Investment Manager also may, in exceptional circumstances, invest in securities not included in the Index that they believe closely reflect the risk and distribution characteristics of securities of the Index or in anticipation of their addition to the Index. Sustainability Risk is integrated into the Index construction as further described in the "**Index Strategies and Sustainability Integration**" sub-section of the "**Investment Objectives and Policies**" section of the Prospectus.

As at the date of this Supplement the Investment Manager and/or Sub-Investment Manager consider the principal adverse impacts of its investment decisions at the Sub-Fund level in order to seek to reduce negative externalities that may be caused by its underlying investments.

This Sub-Fund promotes environmental or social characteristics in accordance with SFDR Article 8 which are detailed in the SFDR Annex to the Supplement and include avoidance of issuers deemed non-compliant with the Index methodology such as violations of UN Global Compact Principles or involvement in controversial weapons businesses, very severe ESG controversies (red flag), tobacco, thermal coal mining, thermal coal power and oil

State Street Global Equity Diversified Index Fund

sands. The Sub-Fund also seeks to promote the reduction of greenhouse gas emissions through tracking the performance of the Index as outlined in the description of the Index construction.

Taxonomy Regulation: While this Sub-Fund promotes environmental characteristics within the meaning of Article 8 of the SFDR, it does not currently commit to investing in any “sustainable investment” within the meaning of the Taxonomy Regulation. The “do no significant harm” principle applies only to those investments underlying the Sub-Fund that take into account the EU criteria for environmentally sustainable economic activities. The investments underlying the remaining portion of the Sub-Fund do not take into account the EU criteria for environmentally sustainable economic activities. The Sub-Fund does not commit to invest more than 0% of its Net Asset Value in Taxonomy aligned investments.

Permitted Investments

Equities: The securities in which the Sub-Fund invests may include equities, or equity-related securities such as American Depositary Receipts (ADRs) or Global Depositary Receipts (GDRs). ADRs and GDRs are typically used instead of local shares, where owning the local shares represented in the Index is not possible or is prohibitively expensive. The Sub-Fund may also invest in China A-Shares via Stock Connect or the RQFII quota.

Other Funds / Liquid Assets: The Sub-Fund may invest up to 10% of its net assets in other regulated open-ended funds where the objectives of such funds are consistent with the objective of the Sub-Fund and where such funds are authorised in member states of the EEA, the United Kingdom, USA, Jersey, Guernsey or the Isle of Man and where such funds are eligible for investment in accordance with the requirements of the Central Bank. Such investments may include collective investment schemes affiliated with Willis and/or the Investment Manager. The Sub-Fund may hold ancillary liquid assets such as deposits in accordance with the UCITS Regulations.

Currencies: The Sub-Fund may hold cash in currencies of the relevant markets or the base currency of its Share Classes for settlement purposes; to gain exposure in specific markets or currencies; or to hedge certain exposures in the Index.

Derivatives: The Sub-Fund may, for efficient portfolio management purposes only, use financial derivative instruments (“FDIs”). Any use of FDIs by the Sub-Fund shall be limited to futures and forward foreign exchange contracts (including non-deliverable forwards) and options, which will provide exposure to the instruments in which the Sub-Fund can directly invest, as described above. Please refer to the section of the Prospectus

headed “**Use of Financial Derivative Instruments**” for further information on the FDI.

Efficient portfolio management means investment decisions involving transactions that are entered into for one or more of the following specific aims: the reduction of risk, the reduction of cost, the generation of additional capital or income for the Sub-Fund with an appropriate level of risk, taking into account the risk profile of the Sub-Fund or the minimisation of tracking error, i.e. the risk that the Sub-Fund return varies from the Index return. FDIs are described in the “Investment Objectives and Strategy – Use of Financial Derivative Instruments” section of the Prospectus.

Securities Lending, Repurchase Agreements & Reverse Repurchase Agreements

The Sub-Fund does not currently participate in a securities lending programme, though it is entitled to do so. The Sub-Fund also does not intend to engage in repurchase agreements and reverse repurchase agreements. **Should the Directors elect to change this policy in the future, due notification will be given to Shareholders and this Supplement will be updated accordingly.**

Borrowing & Risk Controls

The Sub-Fund will not utilise borrowing other than on a temporary basis for settlement reasons. While the Sub-Fund may be leveraged as a result of its investments in derivative instruments, such leverage will not exceed 100% of the Sub-Fund’s total Net Asset Value. The Sub-Fund’s global exposure and leverage is calculated using the commitment approach.

Investment Risks

Investment in the Sub-Fund carries with it a degree of risk. Investors should read the “**Risk Information**” section of the Prospectus. In addition, the following risks are particularly relevant for the Sub-Fund:

Currency Hedging Risk: Hedges are sometimes subject to imperfect matching between the hedging transaction and the risk sought to be hedged. There can be no assurance that the Sub-Fund’s hedging transactions will be effective. As the purpose of currency hedging is to try to reduce or eliminate losses caused by exchange rate fluctuations, it can also reduce or eliminate gains where the currency in which the Sub-Fund’s assets are denominated appreciates.

Currency Risk: The value of the Sub-Fund’s assets may be affected favourably or unfavourably by currency exchange rates, currency exchange control regulations, and restrictions or prohibitions on the repatriation of

State Street Global Equity Diversified Index Fund

foreign currencies. Foreign currency exchange rates may have significant volatility, and changes in the values of foreign currencies may result in substantial declines in the values of the Sub-Fund's assets denominated in foreign currencies.

Equity and Equity related securities Risk: The market prices of equity and equity related securities may go up or down, sometimes rapidly or unpredictably. The value of these securities may decline for reasons that directly relate to the issuer and/or due to general industry or market conditions, such as real or perceived adverse economic conditions, changes in the general outlook for corporate earnings, changes in interest or currency rates, or adverse investor sentiment generally. Equity markets tend to move in cycles, which may cause stock prices to fall over short or extended periods of time.

Emerging Markets Risk: Risks of investing in emerging markets include, among others, greater political and economic instability, possible trade barriers, less governmental supervision and regulation, greater volatility in currency exchange rates, currency transfer restrictions or difficulties in gaining currency exposure, less developed securities markets, legal systems and financial services industries, differences in auditing and financial reporting standards, and greater dependence on revenue from particular commodities or international aid.

Index Tracking Risk: The Sub-Fund return may not match the return of the Index. It is currently anticipated that the Sub-Fund will track the Index with a potential variation of up to 1% annually under normal market conditions. The Sub-Fund's ability to track the Index will be affected by Sub-Fund expenses, the amount of cash and cash equivalents held in its portfolio including to reflect periodic rebalancing of the Index, and the frequency and the timing of purchases and sales of interests in the Sub-Fund. The Investment Manager and/or the Sub-Investment Manager may attempt to replicate the performance of Index return by investing in a sub-set of the securities in the Index, or in some securities not included in the Index, potentially increasing the risk of divergence between the Sub-Fund's return and that of the Index.

Integrating Sustainability Risk: The integration of Sustainability Risk by the Index does not assure the mitigation of any or all Sustainability Risk. Any deterioration in the financial profile of an underlying investment affected by a Sustainability Risk may have a corresponding negative impact on the Net Asset Value and/or performance of the investing Sub-Fund.

Liquidity Risk: Lack of a ready market or restrictions on resale may limit the ability of the Sub-Fund to sell a security at an advantageous time or price or at all. Illiquid securities may trade at a discount from comparable, more liquid investments and may be

subject to wide fluctuations in market value. Illiquidity of the Sub-Fund's holdings may limit the ability of the Sub-Fund to obtain cash to meet redemptions on a timely basis.

PRC Investments Risk: In addition to the risks of investing in emerging markets, risks of investing in PRC Investments markets include, among others, trading suspensions, currency transfer/exposure restrictions, limits on holdings of PRC Investments and use of brokers, untested concepts regarding new treatment of beneficial ownership, reliance on Access Programme(s) which may be discontinued or substantially changed, custody risks including a lack of sufficient segregation of assets and tax uncertainty.

Risks related to Screened Indices: There is a risk that the screen provider may make errors, such as incorrect assessment of the screen criteria and/or include incorrect/exclude correct constituents, in the screening process or discontinue its screening services. In such circumstances, the Sub-Fund may change the Index although there is no guarantee that a replacement Index would result in a similar screening process to that intended or would be available at all.

SFDR – Fund Classification Risk: The SFDR has phased implementation from 10 March 2021 and imposes new disclosure obligations on financial market participants. As at the date of this Prospectus, the implementing Regulatory Technical Standards (Level 2) for SFDR have been adopted by the European Commission, but certain concepts newly introduced by SFDR are not currently the subject of centralised implementing standards, local guidance or established market practice. The Sub-Fund has been assessed and classified in good faith based on the relevant information currently available. As these standards and guidance develop, the SFDR related disclosures and the Article 8 classification indicated in this Supplement and on the Website are subject to change and may no longer apply.

Share Class Risk: There is no segregation of liabilities between Classes of the Sub-Fund. While the Investment Manager and/or the Sub-Investment Manager will seek to ensure that gains/losses on and the costs of the relevant FDI associated with any currency hedging strategy will accrue solely to the Class for which it is intended, the transactions could result in liabilities for other Classes.

Investor Profile

The typical investors of the Sub-Fund are expected to be institutional and intermediary investors who want to take medium or long term exposure to the performance of global developed and emerging equity markets and are prepared to accept the risks associated with an investment of this type, and the expected medium to

State Street Global Equity Diversified Index Fund

high volatility of the Sub-Fund.

Share Classes

As of the date of this Supplement, the Sub-Fund offers the following Share Classes of the Sub-Fund:

- **Class B Shares** - reserved for institutional investors who have entered into an investment management agreement or other arrangements with the Investment Manager and/or the Sub-Investment Manager or any of their affiliates, in each case in a format satisfactory to the Directors (a “**Qualifying Agreement**”), or as the Directors may otherwise, in their sole discretion, determine.
- **Class I Shares** - reserved for institutional investors.
- **Class A Shares** –available to all investors.

Subscriptions & Redemptions

Investors may subscribe for, convert or redeem Shares in the Sub-Fund on each Dealing Day at the price with an appropriate provision for Duties and Charges, and in accordance with the provisions in the “Purchase and Sale Information” section of the Prospectus.

For redemptions, a written redemption request signed by the Shareholder is required to be received by the Administrator by the Dealing Deadline.

Shares in the Sub-Fund will be available at the initial offer price from 9 a.m. (Irish time) on 25 September 2025 until 5 p.m. (Irish time) on 24 March 2026 or such other date as the Directors may determine. The initial offer price will be USD 100 / EUR 100 / GBP 100 as relevant. Following the closing date of the Initial Offer Period, Shares will be issued at the Subscription Price.

Fees and Expenses

In addition to the fees and expenses described below, Shareholders should read the section in the Prospectus entitled “Fees and Expenses” for a description of other fees and expenses that may apply to their investment in the Sub-Fund.

Operating Expenses

The Sub-Fund shall bear its attributable proportion of the organisational and operating expenses of the Fund. These are set out in detail under the section entitled “**Fees and Expenses**” in the Prospectus.

Establishment Costs

The establishment costs of the Sub-Fund, which are

not expected to exceed EUR 25,000, will be borne by the Sub-Fund and amortised over a period of 5 years commencing on the date of first issue of Shares (or such shorter period as determined by the Directors at their discretion).

Investment Management Fees

The Management Company / Investment Manager shall be entitled to management fees payable out of the assets of the Sub-Fund accruing daily and payable monthly in arrears at the end of each calendar month as described in the table below attributable to each relevant Class. The Management Company shall pay the fees of the Sub-Investment Managers out of this fee. Any fees of the Management Company, if applicable, will be discharged from the below investment management fee amounts, in a manner agreed between the Fund and the Management Company.

Administration and Depositary Fees

The Administrator and Depositary shall be entitled to administration and depositary fees payable out of the assets of the Sub-Fund accruing daily and payable monthly in arrears at the end of each calendar month at a combined annual rate not to exceed 1.5% of the Net Asset Value of the Sub-Fund subject a minimum monthly fee, exclusive of out-of-pocket expenses.

Share*	B		I		A	
Share Class Currency - Unhedged	EUR, GBP, USD		EUR, GBP, USD		EUR, GBP, USD	
Share Class Currency - hedged	EUR, GBP, USD		EUR, GBP, USD		EUR, GBP, USD	
Dividend Policy**	Acc	Dist	Acc	Dist	Acc	Dist
Minimum initial investment and ongoing holding***	USD 10,000,000 or equivalent in the relevant Class Currency		USD 3,000,000 or equivalent in the relevant Class Currency		USD 50,000 or equivalent in the relevant Class Currency	
Minimum subsequent investment **	USD 5,000 or equivalent in the relevant Class Currency		USD 5,000 or equivalent in the relevant Class Currency		USD 5,000 or equivalent in the relevant Class Currency	
Fees	Unhedged	Hedged	Unhedged	Hedged	Unhedged	Hedged
Investment Management Fees****	0%	0%	0.20%	0.22%	0.30%	0.32%

*At the date of this Supplement, all available Share Classes may not be seeded.

**All above stated minimums may be waived by the Directors at their sole discretion or by the Directors' duly appointed delegate. The Sub-Fund may redeem the remaining holdings of any Shareholder who redeems his holdings below the foregoing minimums.

Index Disclaimer

THIS SUB-FUND IS NOT SPONSORED, ENDORSED, SOLD OR PROMOTED BY MSCI INC. ("MSCI"), ANY OF ITS AFFILIATES, ANY OF ITS INFORMATION PROVIDERS OR ANY OTHER THIRD PARTY INVOLVED IN, OR RELATED TO, COMPILING, COMPUTING OR CREATING ANY MSCI INDEX (COLLECTIVELY, THE "MSCI PARTIES"). THE MSCI INDICES ARE THE EXCLUSIVE PROPERTY OF MSCI ("MSCI INDICES"). MSCI AND THE MSCI INDICES NAMES ARE SERVICE MARK(S) OF MSCI OR ITS AFFILIATES AND HAVE BEEN LICENSED FOR USE FOR CERTAIN PURPOSES BY LICENSEE. NONE OF THE MSCI PARTIES MAKES ANY REPRESENTATION OR WARRANTY, EXPRESS OR IMPLIED, TO THE ISSUER OR OWNERS OF THE SUB-FUND OR ANY OTHER PERSON OR ENTITY REGARDING THE ADVISABILITY OF INVESTING IN SUB-FUNDS GENERALLY OR IN THIS SUB-FUND PARTICULARLY OR THE ABILITY OF ANY MSCI INDICES TO TRACK CORRESPONDING STOCK MARKET PERFORMANCE. MSCI OR ITS AFFILIATES ARE THE LICENSORS OF CERTAIN TRADEMARKS, SERVICE MARKS AND TRADE NAMES AND OF THE MSCI INDICES WHICH ARE DETERMINED, COMPOSED AND CALCULATED BY MSCI WITHOUT REGARD TO THIS SUB-FUND OR THE ISSUER OR OWNERS OF THIS SUB-FUND OR ANY OTHER PERSON OR ENTITY. NONE OF THE MSCI PARTIES HAS ANY OBLIGATION TO TAKE THE NEEDS OF THE ISSUER OR OWNERS OF THIS SUB-FUND OR ANY OTHER PERSON OR ENTITY INTO CONSIDERATION IN DETERMINING, COMPOSING OR CALCULATING THE MSCI INDICES. NONE OF THE MSCI PARTIES IS RESPONSIBLE FOR OR HAS PARTICIPATED IN THE DETERMINATION OF THE TIMING OF, PRICES AT, OR QUANTITIES OF THIS SUB-FUND TO BE ISSUED OR IN THE DETERMINATION OR CALCULATION OF THE EQUATION BY OR THE CONSIDERATION INTO WHICH THIS SUB-FUND IS REDEEMABLE. FURTHER, NONE OF THE MSCI PARTIES HAS ANY OBLIGATION OR LIABILITY TO THE ISSUER OR OWNERS OF THIS SUB-FUND OR ANY OTHER PERSON OR ENTITY IN CONNECTION WITH THE ADMINISTRATION, MARKETING OR OFFERING OF THIS SUB-FUND.

ALTHOUGH MSCI SHALL OBTAIN INFORMATION FOR INCLUSION IN OR FOR USE IN THE CALCULATION OF THE MSCI INDICES FROM SOURCES THAT MSCI CONSIDERS RELIABLE, NONE OF THE MSCI PARTIES WARRANTS OR GUARANTEES THE ORIGINALITY, ACCURACY AND/OR THE COMPLETENESS OF ANY MSCI INDICES OR ANY DATA INCLUDED THEREIN. NONE OF THE MSCI PARTIES MAKES ANY WARRANTY, EXPRESS OR IMPLIED, AS TO RESULTS TO BE OBTAINED BY THE ISSUER OF THE SUB-FUND, OWNERS OF THE SUB-FUND, OR ANY OTHER PERSON OR ENTITY, FROM THE

INCLUDED THEREIN. NONE OF THE MSCI PARTIES SHALL HAVE ANY LIABILITY FOR ANY ERRORS, OMISSIONS OR INTERRUPTIONS OF OR IN CONNECTION WITH ANY MSCI INDICES OR ANY DATA INCLUDED THEREIN. FURTHER, NONE OF THE MSCI PARTIES MAKES ANY EXPRESS OR IMPLIED WARRANTIES OF ANY KIND, AND THE MSCI PARTIES HEREBY EXPRESSLY DISCLAIM ALL WARRANTIES OF MERCHANTABILITY AND FITNESS FOR A PARTICULAR PURPOSE, WITH RESPECT TO EACH MSCI INDICES AND ANY DATA INCLUDED THEREIN. WITHOUT LIMITING ANY OF THE FOREGOING, IN NO EVENT SHALL ANY OF THE MSCI PARTIES HAVE ANY LIABILITY FOR ANY DIRECT, INDIRECT, SPECIAL, PUNITIVE, CONSEQUENTIAL OR ANY OTHER DAMAGES (INCLUDING LOST PROFITS) EVEN IF NOTIFIED OF THE POSSIBILITY OF SUCH DAMAGES.

As of the date of the Supplement, the Sub-Fund uses (within the meaning of the Benchmark Regulation) the following benchmark: WTW Global Equity Diversified Index on MSCI ACWI*, which is provided by MSCI Limited in its capacity as administrator (within the meaning of the Benchmark Regulation).

As of the date of the Supplement, MSCI Limited is listed on the ESMA register referred to in article 36 of the Benchmark Regulation as an administrator authorised pursuant to article 34 of the Benchmark Regulation.

SFDR ANNEX

Sustainable investment means an investment in an economic activity that contributes to an environmental or social objective, provided that the investment does not significantly harm any environmental or social objective and that the investee companies follow good governance practices.

The **EU Taxonomy** is a classification system laid down in Regulation (EU) 2020/852, establishing a list of **environmentally sustainable economic activities**. That Regulation does not lay down a list of socially sustainable economic activities. Sustainable investments with an environmental objective might be aligned with the Taxonomy or not.

Product name: State Street Global Equity Diversified Index Fund (the “Sub-Fund”) **Legal entity identifier:** 98450064DB58DB3IFE05

Environmental and/or social characteristics

Does this financial product have a sustainable investment objective?

☒ ☒ ☐

Yes

☒ ☐ ☒

No

☐ It will make a minimum of sustainable investments with an environmental objective: ____%

☐ It promotes Environmental/ Social (E/S) characteristics and while it does not have as its objective a sustainable investment, it will have a minimum proportion of ____% of sustainable investments

☐ in economic activities that qualify as environmentally sustainable under the EU Taxonomy

☐ with an environmental objective in economic activities that qualify as environmentally sustainable under the EU Taxonomy

☐ in economic activities that do not qualify as environmentally sustainable under the EU Taxonomy

☐ with an environmental objective in economic activities that do not qualify as environmentally sustainable under the EU Taxonomy

☐ with a social objective

☐ It will make a minimum of sustainable investments with a social objective: ____%

☒ It promotes E/S characteristics, but will not make any sustainable investments

What environmental and/or social characteristics are promoted by this financial product?



The Sub-Fund promotes the reduction of greenhouse gas emissions by investing in companies within the WTW Global Equity Diversified Index MSCI ACWI (the “**Index**”) such that the Sub-Fund’s portfolio overall exhibits lower greenhouse emission exposure relative to the MSCI ACWI (All Country World Index) (the “**Parent Index**”).

The Index uses an optimization process that aims to:

- reduce the weighted average greenhouse gas emissions intensity by 50% compared to the Parent Index by time of the November 2030 Index Review when compared to the Parent Index levels as computed in November 2019 Index Review,
- reduce the weighted average greenhouse gas emissions intensity by 10% compared to the Parent Index at the time of Index Review,
- on an annualized basis, reducing the weighted average WTW Climate Transition Value-at-Risk (or 'CTVaR') (which is calculated by Willis Limited ("Willis") and is a measure of the risk of a reduction in an asset's value due to the global transition to net-zero emissions) of the Index to 75% of CTVaR of the Parent Index.

Additionally, on the basis of Index exclusions, the Sub-Fund promotes environmental and social characteristics related to reduction of environmental footprint and adverse social impact by excluding investment in companies involved in very severe ESG controversies (red flag), thermal coal mining; thermal coal power and oil sands as well as companies assessed as having misalignment with the United Nations Global Compact Principles (UNGC) relating to the environment (principles 7-9).

The Sub-Fund also, on the basis of Index exclusions, promotes the social characteristic related to reduction of the availability of weapons by excluding investments in securities of companies involved in the manufacture of controversial weapons.

The Sub-Fund also promotes social characteristics related to: (a) reduction of the availability of weapons by excluding investment in companies associated with controversial weapons (b) reduction of adverse health impacts by excluding investment in companies associated with tobacco, (c) support for human rights, labour standards and anti-corruption by excluding investment in companies which violate UNGC Principles relating to human rights (principles 1 and 2), labour (principles 3 to 6) and anti-corruption (principle 10) as well as companies associated with adult entertainment and severe ESG controversies.

The UNGC Principles is the world largest corporate sustainability initiative aimed at companies to align their strategies and operations with universal principles on human rights, labour, environment and anti-corruption, and take actions that advance societal goals.

The Index seeks to obtain an ESG Score similar to the Parent Index, as calculated by the Index provider.

Sustainability indicators

measure how the environmental or social characteristics promoted by the financial product are attained.

What sustainability indicators are used to measure the attainment of each of the environmental or social characteristics promoted by this financial product?

The following sustainability indicators form part of the ESG criteria of the Index and consequently, the attainment of the associated environmental and/or social characteristics is measured through the climate metrics, ESG ratings and exclusions produced by the Index provider and incorporated into the index construction methodology.

- **Climate metrics:** The climate metrics embedded within the Index methodology assess the carbon footprint and climate impact of companies within the Index. The Index uses these metrics to measure the reduction of greenhouse gas emissions by Index constituents, thereby contributing to the environmental objectives of the Sub-Fund. The Index aims to reduce the weighted average greenhouse gas emissions intensity and CTVaR as compared to the Parent Index.
- **ESG ratings:** Index provider's ESG ratings aim to measure entities' management of environmental, social and governance risks and opportunities. ESG ratings use a weighted average key issue calculation that is normalized by industry to arrive at an industry-adjusted ESG score (0-10), which is then translated to a seven-point scale from 'AAA' to 'CCC', indicating how an entity manages relevant key issues relative to industry peers. The Index is then constructed by selecting constituents of the Parent Index and applying an optimization process that aims to achieve a similar industry-adjusted ESG score as that of the Parent Index
- **Exclusions:** Companies that do not comply with the UN Global Compact principles or are involved in controversial activities such as controversial weapons businesses, very severe ESG controversies (red flag), tobacco, thermal coal mining, thermal coal power and oil sands are excluded from the Index under Index methodology exclusion criteria. These exclusions applied by the Index ensure that the Sub-Fund promotes positive environmental and social

outcomes by not investing in harmful or unethical businesses. This will be measured by the percentage of the Sub-Fund's assets invested in companies involved in the excluded business. As such, the Sub-Fund does not intend to hold any securities that do not meet the relevant screening criteria.

The proportion of the Sub-Fund's portfolio invested in securities included in the Index constitutes the sustainability indicator used to measure the attainment of the environmental or social characteristics embedded within the Index and promoted by the Sub-Fund. Under normal circumstances, the Sub-Fund will invest at least 90% of its Net Asset Value in the Index constituents.

As such, the Sub-Fund does not intend to hold any securities that do not meet the relevant ESG criteria embedded within the Index methodology

What are the objectives of the sustainable investments that the financial product partially intends to make and how does the sustainable investment contribute to such objectives?

The Sub-Fund does not commit to making sustainable investments within the meaning of the SFDR or the Taxonomy Regulation.

How do the sustainable investments that the financial product partially intends to make, not cause significant harm to any environmental or social sustainable investment objective?

The Sub-Fund does not commit to investing in sustainable investments.

— *How have the indicators for adverse impacts on sustainability factors been taken into account?*

N/A

— *How are the sustainable investments aligned with the OECD Guidelines for Multinational Enterprises and the UN Guiding Principles on Business and Human Rights?*

N/A

Principal adverse impacts are the most significant negative impacts of investment decisions on sustainability factors relating to environmental, social and employee matters, respect for human rights, anti-corruption and anti-bribery matters.

The EU Taxonomy sets out a “do not significant harm” principle by which Taxonomy-aligned investments should not significantly harm EU Taxonomy objectives and is accompanied by specific EU criteria.

The “do no significant harm” principle applies only to those investments underlying the financial product that take into account the EU criteria for environmentally sustainable economic activities. The investments underlying the remaining portion of this financial product do not take into account the EU criteria for environmentally sustainable economic activities.

Any other sustainable investments must also not significantly harm any environmental or social objectives.

Does this financial product consider principal adverse impacts on sustainability factors?

✓ **Yes**

The Sub-Fund pursues a reduction of negative externalities, which refer to the adverse effects that the underlying investments may have on certain environmental and social factors, caused by the underlying investments and in that context considers the Principal Adverse Impacts (“PAI”) on sustainability factors in the application of the Index exclusions. Specifically, the Index considers:

- Violations of UN Global Compact Principles
- Exposure to controversial weapons
- Greenhouse gas emissions
-

Further information on the PAIs will be found in the periodic reports for the Sub-Fund.

☐ No



What investment strategy does this financial product follow?

The investment policy of the Sub-Fund is to track the performance of the Index as closely as possible using a replication strategy as further described in the “Investment Objectives and Policies” section of the Prospectus, while seeking to minimise as far as possible the tracking difference between the Sub-Fund’s performance and that of the Index.

Securities in the Sub-Fund are selected primarily from the constituents of the Index. Essentially, the portfolio of the Sub-Fund would be a near mirror-image of the Index. The Sub-Fund also may, in exceptional circumstances, invest in securities not included in the Index but that are believed to closely reflect the risk and distribution characteristics of securities of the Index. The Sub-Fund may also hold (i) securities which, in the opinion of the Investment Manager, are likely to become part of the Index and (ii) securities acquired through corporate activity which may not form part of the Index. The Index is constructed by selecting constituents from its corresponding parent index i.e. MSCI ACWI (All Country World Index) (“Parent Index”) using an optimisation process that aims to:

- reduce the weighted average greenhouse gas emissions intensity by 50% compared to the Parent Index by the November 2030 Index Review compared to the MSCI ACWI as computed in November 2019 Index Review,
- reduce the weighted average greenhouse gas emissions (GHG) intensity by 10% compared to the Parent Index at the time of Index Review,
- on an annualized basis, reduce the weighted average WTW Climate Transition Value-at-Risk (or ‘CTVaR’) (which is calculated by Willis and is a measure of the risk of a reduction in an asset’s value due to the global transition to net-zero emissions of the Index to 75% of CTVaR of the Parent Index; and
- excludes companies involved in controversial weapons businesses, very severe ESG controversies (red flag), companies assessed as having misalignment with the United Nations Global Compact Principles, tobacco; thermal coal mining; thermal coal power and oil sands.
- obtain an ESG Score similar to the Parent Index, as calculated by the Index provider.

The Parent Index measures the performance of large and mid capitalisation stocks across a number of global equity markets, covering equity securities from both developed and emerging markets.

The Index also excludes companies meeting the exclusion criteria – companies involved in very serious controversies; companies not assessed by MSCI ESG Research on ESG Ratings; companies that are involved in the following business activities – non-compliance with the UNGC Principles, controversial weapons; tobacco; thermal coal mining; thermal coal power; oil sands.

What are the binding elements of the investment strategy used to select the investments to attain each of the environmental or social characteristics promoted by this financial product?

Securities in the Sub-Fund are selected primarily from the constituents of the Index, while the Index provider applies the exclusion criteria on all of the Index constituents. This results in the exclusion of any securities considered as not compliant with the UNGC principles (international norms in relation to the environment, human rights & communities, labour rights & supply chains, customers and governance). Additionally, any securities associated with controversial weapons, tobacco, thermal coal mining, thermal coal power and oil sands are excluded from the Index.

The investment strategy guides investment decisions based on factors such as investment objectives and risk tolerance.

What is the committed minimum rate to reduce the scope of the investments considered prior to the application of that investment strategy?

The Fund excludes investments in issuers as set out in the investment strategy and binding requirements outlined above, however the Sub-Fund does not have a committed minimum rate to reduce the scope of investments.

Good governance practices include sound management structures, employee relations, remuneration of staff and tax compliance.

What is the policy to assess good governance practices of the investee companies?

Good governance is practiced by the Sub-Fund by tracking the Index which excludes companies that (i) fail to meet globally accepted norms and standards related to governance matters, or (ii) are involved in incidents with negative governance implications. The Index methodology includes the assessment of controversies concerning the negative environmental, social, and/or governance impact of company operations, products and services. The framework used is designed to be consistent with international norms represented by the UN Declaration of Human Rights, the ILO Declaration on Fundamental Principles and Rights at Work and the UN Global Compact Principles. Companies that are deemed by the Index provider as non-compliant are not eligible for inclusion in the Index.

Companies deemed by the Investment Manager not in violation of the UN Global Compact Principles are considered to exhibit good governance. The criteria used by the Index provider as determined by the Index methodology in relation to the assessment of good governance practices of the investee companies is consistent with the Investment Manager's approach by excluding companies deemed by the Index provider to be in violation of the UN Global Compact Principles. For information on the methodologies used in the construction of the Index and further information on the exclusion criteria and data sources, please refer to MSCI's index methodology description which can be found at the following link:

<https://www.msci.com/documents/10199/d27ddb2f-db4b-bd4e-3a3c-d0987ac8672b>



What is the asset allocation planned for this financial product?

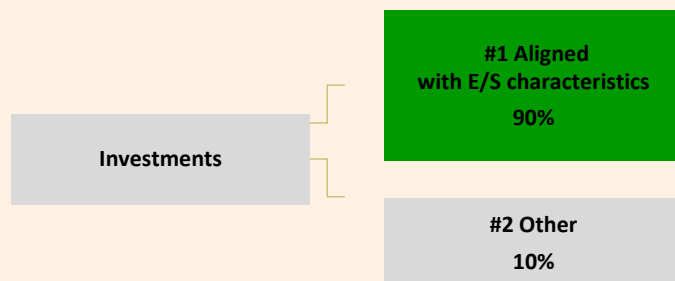
Asset allocation describes the share of investments in specific assets.

The Investment Manager employs a binding ESG methodology which aims to build a portfolio where at least 90% of the Sub-Fund's assets are invested in securities which are #1 Aligned with environmental and social characteristics as outlined in the table below. The remaining portion (<10%) of the portfolio, consisting of cash and cash equivalents, or financial derivative instruments employed for efficient portfolio management, hedging or liquidity management purposes will be classified under #2 Other in the below table, will not be aligned with the promoted environmental and social characteristics and will not have any environmental or social safeguards in place.

Taxonomy-aligned activities are expressed as a share of:

— **turnover** reflecting the share of revenue from green activities of investee companies

— **capital expenditure** (CapEx) showing the green investments made by investee companies, e.g. for a transition to a green economy.



#1 Aligned with E/S characteristics includes the investments of the financial product used to attain the environmental or social characteristics promoted by the financial product.

#2 Other includes the remaining investments of the financial product which are neither aligned with the environmental or social characteristics, nor are qualified as sustainable investments.

How does the use of derivatives attain the environmental or social characteristics promoted by the financial product?

— **operational expenditure** (OpEx) reflecting green operational activities of investee companies.

To the extent that the Sub-Fund may use financial derivative instruments, these will not be used to attain the environmental or social characteristics promoted by the Sub-Fund.

To comply with the EU Taxonomy, the criteria for **fossil gas** include limitations on emissions and switching to renewable power or low-carbon fuels by the end of 2035. For **nuclear energy**, the criteria include comprehensive safety and waste management rules.



To what minimum extent are sustainable investments with an environmental objective aligned with the EU Taxonomy?

While this Sub-Fund promotes environmental characteristics within the meaning of Article 8 of the SFDR, it does not currently commit to investing in any “sustainable investment” within the meaning of the Taxonomy Regulation. Therefore, the Sub-Fund does not commit to invest more than 0% of its Net Asset Value in Taxonomy Regulation aligned investments. It should therefore be noted that this Sub-Fund does not take into account the EU criteria for environmentally sustainable economic activities within the meaning of the Taxonomy Regulation and, as such, its portfolio alignment with the Taxonomy Regulation is not calculated. For this reason, the “do no significant harm” principle does not apply to any of the investments of this Fund.

Therefore, there is no intentional alignment with the Taxonomy Regulation.

Does the financial product invest in fossil gas and/or nuclear energy related activities that comply with the EU Taxonomy¹

☐

Yes:

☐

In fossil gas

☐

In nuclear energy

☒

No

Enabling activities directly enable other activities to make a substantial contribution to an environmental objective.

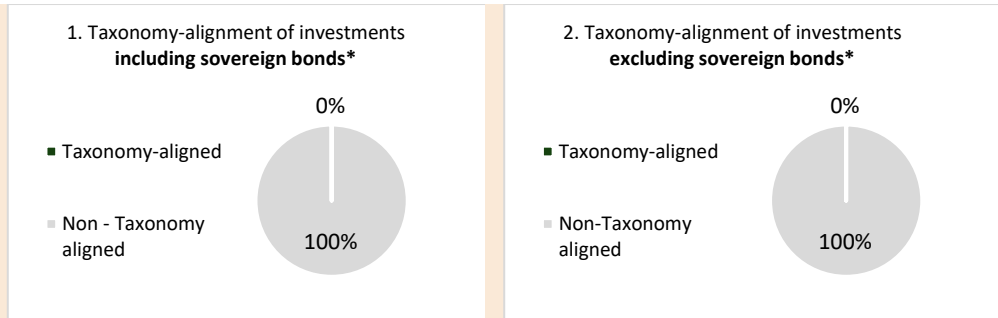
Transitional activities are activities for which

The two graphs below show in green the minimum percentage of investments that are aligned with the EU Taxonomy. As there is no appropriate methodology to determine the Taxonomy-alignment of sovereign bonds, the first graph shows the Taxonomy alignment in relation to all the investments of the financial product including sovereign bonds, while the second graph shows the Taxonomy alignment only in relation to the investments of the financial product other than sovereign bonds.*

¹ Fossil gas and/or nuclear related activities will only comply with the EU Taxonomy where they contribute to limiting climate change (“climate change mitigation”) and do not significantly harm any EU Taxonomy objective – see explanatory note in the left hand margin. The full criteria for fossil gas and nuclear energy economic activities that comply with the EU Taxonomy are laid down in Commission Delegated Regulations (EU) 2022/1214.

State Street Global Equity Diversified Index Fund

low-carbon alternatives are not yet available and among others have greenhouse gas emission levels corresponding to the best performance.



* For the purpose of these graphs, 'sovereign bonds' consist of all sovereign exposures

What is the minimum share of investments in transitional and enabling activities?

As the Sub-Fund does not commit to invest in any "environmentally sustainable investment" within the meaning of the Taxonomy Regulation, the minimum share of investments in transitional and enabling activities within the meaning of the Taxonomy Regulation is therefore also set at 0%.

What is the minimum share of sustainable investments with an environmental objective that are not aligned with the EU Taxonomy

The Sub-Fund promotes environmental and social characteristics but does not commit to making any environmentally sustainable investments. As a consequence, the Sub-Fund does not commit to a minimum share of sustainable investments with an environmental objective that are not aligned with the EU Taxonomy.

What is the minimum share of socially sustainable investments?

N/A

What investments are included under "#2 Other", what is their purpose and are there any minimum environmental or social safeguards?

The Sub-Fund may hold a portion of its assets in cash or cash equivalents, and financial derivative instruments employed for efficient portfolio management purposes, at the Investment Manager's discretion, which are classified under #2 Other in the above table. Given the nature of cash or cash equivalents or financial derivative instruments employed for efficient portfolio management, hedging or liquidity management purposes, such assets will not be aligned with environmental and social characteristics nor will there be any environmental or social safeguards in place.

Is a specific index designated as a reference benchmark to determine whether this financial product is aligned with the environmental and/or social characteristics that it promotes?

Reference benchmarks are indexes to measure whether the financial product attains the environmental or social characteristics that they promote.

Yes, the Sub-Fund is an index fund tracking the performance of the Index. The Index has been designated for the purpose of attaining the environmental and social characteristics promoted by the Sub-Fund. The Index is constructed by selecting constituents of the Parent Index and applying an optimization process that aims to:

- reduce the weighted average greenhouse gas emissions intensity by 50% compared to the Parent Index by the November 2030 Index Review compared to the MSCI ACWI as computed in November 2019 Index Review,
- reduce the weighted average greenhouse gas emissions (GHG) intensity by 10% compared to the Parent Index at the time of Index Review,
- on an annualized basis, reduce the weighted average WTW Climate Transition Value-

at-Risk (or 'CTVaR') (which is calculated by Willis and is a measure of the risk of a reduction in an asset's value due to the global transition to net-zero emissions of the Index to 75% of CTVaR of the Parent Index; and

- excludes companies involved in controversial weapons businesses, very severe ESG controversies (red flag), companies assessed as having misalignment with the United Nations Global Compact Principles, tobacco; thermal coal mining; thermal coal power and oil sands.
- obtain an ESG Score similar to the Parent Index, as calculated by the Index provider
- Exclude investment in companies that are involved in the below controversial activities:
 - Non-compliance with the United Nations Global Compact Principles
 - Controversial Weapons
 - Thermal Coal Mining
 - Thermal Coal Power
 - Tobacco
 - Oil Sands

How is the reference benchmark continuously aligned with each of the environmental or social characteristics promoted by the financial product?

The Index is reviewed and rebalanced on a quarterly basis, with the changes implemented as of the close of the last business day of February, May, August and November at which time the Index is screened for the ESG exclusion criteria outlined above.

Investors should note the Index Risk, Index Error Risk and Tracking Risk disclosures included in the Risk Information section of the Prospectus.

How is the alignment of the investment strategy with the methodology of the index ensured on a continuous basis?

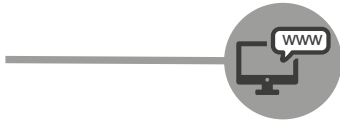
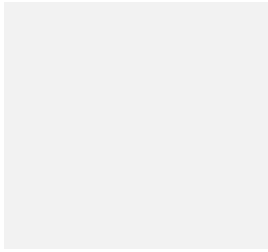
The Sub-Fund rebalances on a quarterly basis, in line with the Index rebalancing frequency. Investors should note in this respect the Index Risk, Index Error Risk and Index Tracking Risk disclosures included in the Risk Information section of the Prospectus.

How does the designated index differ from a relevant broad market index?

The Index is based on the MSCI ACWI Index, its parent index, which captures the investible equity market performance of developed and emerging markets. The Sub-Fund's designated Index (i.e. WTW Global Equity Diversified Index on MSCI ACWI*) measures the performance of large and mid-capitalisation stocks across developed and emerging equity markets while aiming to:

- reduce the weighted average greenhouse gas emissions intensity by 50% compared to the Parent Index by the November 2030 Index Review compared to the MSCI ACWI as computed in November 2019 Index Review,
- reduce the weighted average greenhouse gas emissions (GHG) intensity by 10% compared to the Parent Index at the time of Index Review,
- on an annualized basis, reduce the weighted average WTW Climate Transition Value-at-Risk (or 'CTVaR') (which is calculated by Willis and is a measure of the risk of a reduction in an asset's value due to the global transition to net-zero emissions of the Index to 75% of CTVaR of the Parent Index; and
- excludes companies involved in controversial weapons businesses, very severe ESG controversies (red flag), companies assessed as having misalignment with the United Nations Global Compact Principles, tobacco; thermal coal mining; thermal coal power and oil sands.
- obtain an ESG Score similar to the Parent Index, as calculated by the Index provider
- Exclude investment in companies that are involved in the below controversial activities:
 - Non-compliance with the United Nations Global Compact Principles
 - Controversial Weapons
 - Thermal Coal Mining
 - Thermal Coal Power
 - Tobacco
 - Oil Sands

State Street Global Equity Diversified Index Fund



Where can the methodology used for the calculation of the designated index be found?

Please refer to the Index methodology description which can be found at the following link:
<https://www.msci.com/documents/10199/d27ddb2f-db4b-bd4e-3a3c-d0987ac8672b>

Where can I find more product specific information online?

More product-specific information can be found on the website

[Fund Finder \(ssga.com\)](https://www.ssga.com)

Please search for State Street Global Equity Diversified Index Fund under the “Fund Groups” heading.