

# Smart Beta Compass

## Protecting Growth in the New Economy

# Q4 2021

04 **Factor Performance**

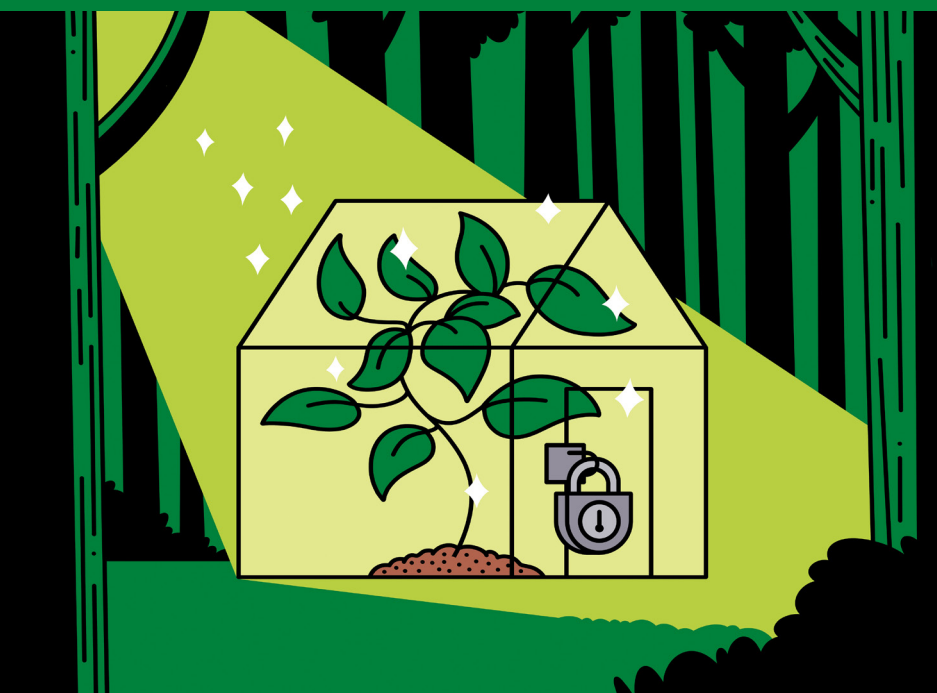
08 **Smart Beta ETF Flows**

11 **Institutional Style Flows  
and Holdings**

15 **Factor Fundamentals**

19 **Factor Correlations**

22 **Implementing  
Smart Beta Investing**



---

## A Leader in Smart Beta Index Investing

---

SPDR is a pioneer in both smart beta and ETF investing. For more than a quarter of a century, we have uncovered research-backed insights and formed strong opinions about how to efficiently harvest factor premia and implement them in a portfolio using ETFs.

Smart beta ETFs allow investors the opportunity, with a single trade, to introduce a factor exposure into their portfolio. In the current environment, we continue to see equity investors positioning for the long term, when markets will resume trading on fundamentals.

---

## Table of Contents

---

04	<b>Factor Performance</b>	The recovery trade offers relative protection in value. Are dividend stocks next?
08	<b>Smart Beta ETF Flows</b>	Investors continued into dividends, with value seeing outflows in Q3.
11	<b>Institutional Style Flows and Holdings</b>	Buying the underweight, selling the overweight, positioning for recovery.
15	<b>Factor Fundamentals</b>	Fundamental metrics of specific factor-driven indices that are tracked by relevant European-listed smart beta ETFs.
19	<b>Factor Correlations</b>	Correlation of returns for specific factor-driven indices that are tracked by relevant European-listed smart beta ETFs.
22	<b>Implementing Smart Beta Investing</b>	Finding ways to protect portfolio growth in the new economy.

---

# Factor Performance

---

**Recent performance of specific factor-driven indices that are tracked by relevant European-listed smart beta ETFs.**

# Factor Performance

The charts in this section show the relative performance of each index against a single cap-weighted market benchmark in three critical geographic regions: World/Global, USA and Eurozone/Europe.

**The recovery trade offers relative protection in value. Are dividend stocks next?** Following a strong start to 2021, equity markets paused in Q3, with the September pullback presenting an entry point for those who missed the Q1 rally. Investor sentiment remains focused on the pickup in economic activity. Concerns over the market overheating have caused some volatility along the way.

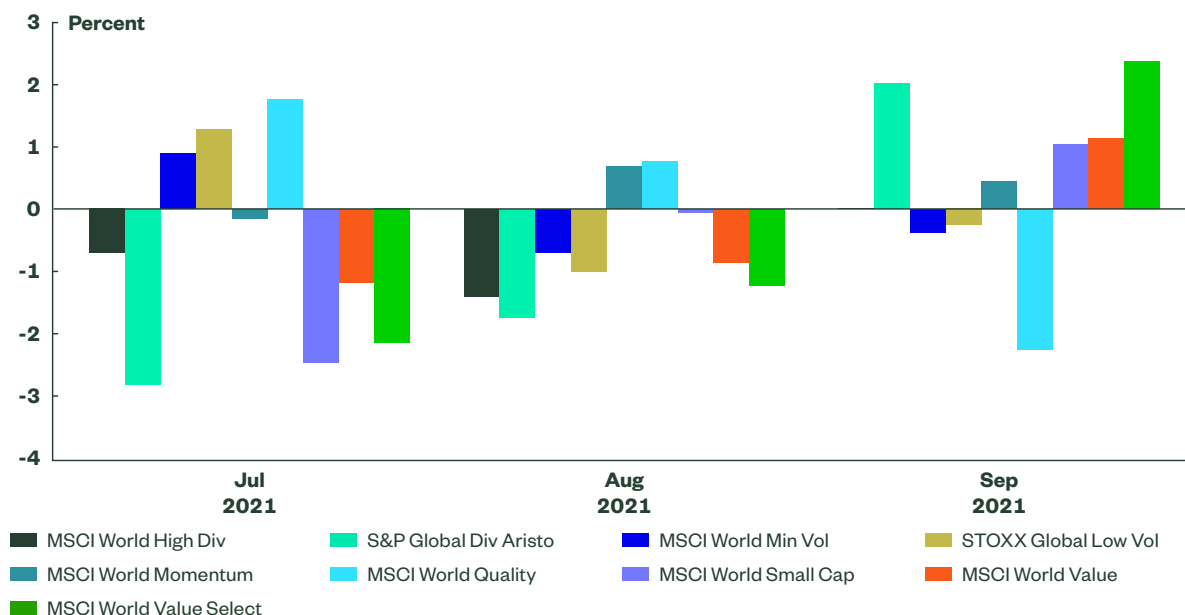
Despite the pullback in September, Value Exposure Select indices have continued to deliver strong year-to-date performance across all regions. The pullback may be used as a buying opportunity for investors who have missed the run, as we will see in the next section on investor flows.

## World/Global

Global equities declined -1.93% in Q3, mostly based on the market pullback experienced in September, as both July and August were net positive. The recovery-focused factor exposures (size and value) joined momentum as the strongest relative performing factors in Q3. The MSCI World Small Cap Index fell 0.75% (size) and the MSCI World Value Select lost 0.54% (value) but outperformed the market significantly, even though they traded nominally lower.

Despite the market pullback in September, volatility exposures were negative both on a nominal and relative basis in the quarter. The Global Dividend Aristocrats Index outperformed the market by more than 2% in September. Investors who have been waiting for an entry point into global dividends may have their opportunity. Most exposures traded significantly lower in September, but dividends and World Value Select provided significant downside protection.

### Relative Monthly Performance vs. MSCI World Index



Source: Bloomberg Finance L.P., as of 30 September 2021. Past performance is not a reliable indicator of future performance. Index returns are unmanaged and do not reflect the deduction of any fees or expenses. See Appendix for index details.

**Looking Forward.** All signs point to the recovery continuing in Q4 2021, as manufacturing PMIs continued to trend positive (see page 23), suggesting the shelves will be stocked for the holiday season. In this environment, value and dividends would remain relatively attractive to investors. The market pullback in September presents an interesting entry point for investors who have missed the recovery trade this year.

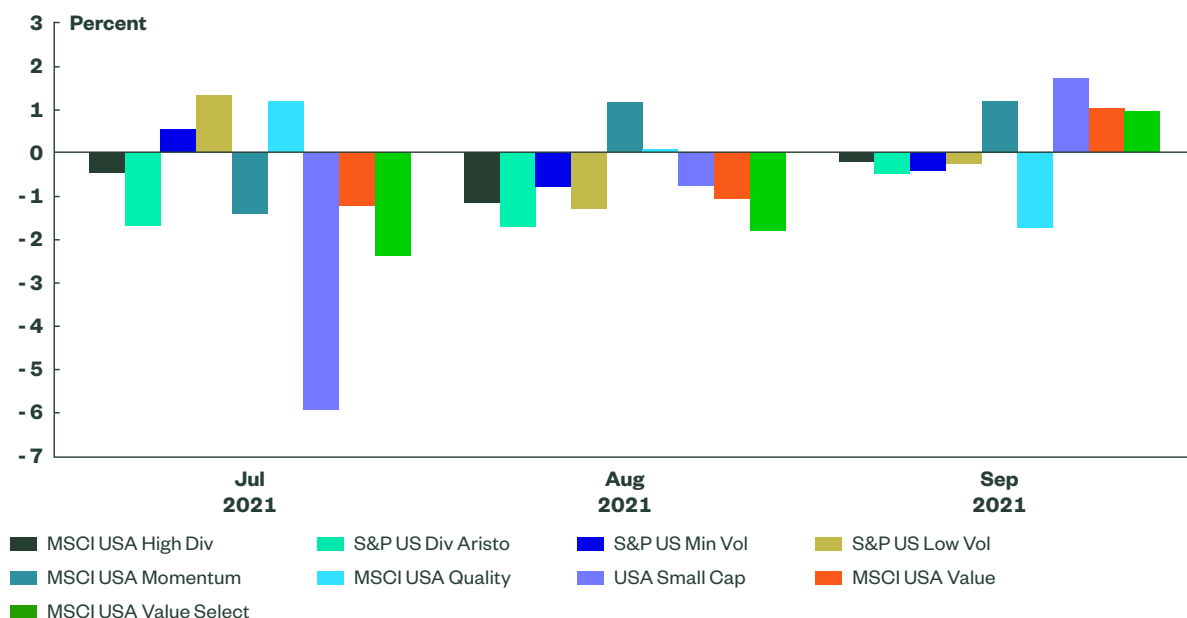
# USA

US equities traded in line with global markets in Q3 2021, with the S&P 500® Index declining nearly 2%. Trading in July was a bit counterintuitive as low volatility led the market, with small cap stocks declining — interesting behaviour in a positive market. As with global equities, the quality factor led other indices to start the quarter before experiencing significant underperformance following the tech selloff in September.

There was a small tailwind behind momentum and small cap exposures. While both factors traded positive on a relative basis, only momentum was nominally positive for the quarter. Despite the large cap market benchmark trading negative, the small cap Russell 2000 Index found 1% of outperformance in Q3, including 2.16% relative outperformance in September.

Value Exposure Select traded nearly in line with the market benchmark, while no single factor outperformed the market benchmark in every month of Q3.

## Relative Monthly Performance vs. the S&P 500® Index



Source: Bloomberg Finance L.P., as of 30 September 2021. Past performance is not a reliable indicator of future performance. Index returns are unmanaged and do not reflect the deduction of any fees or expenses. See Appendix for index details.

**Looking Forward.** We expect the short-term pull back in dividend and Value Exposure Select experienced in Q3 to be temporary, with the year-to-date trend to indicate further support for a re-opening rally in US equities. Dividend Aristocrats have high exposure to stocks specifically expected to benefit from an uptick in consumer activity and the normalisation of interest rate policy.

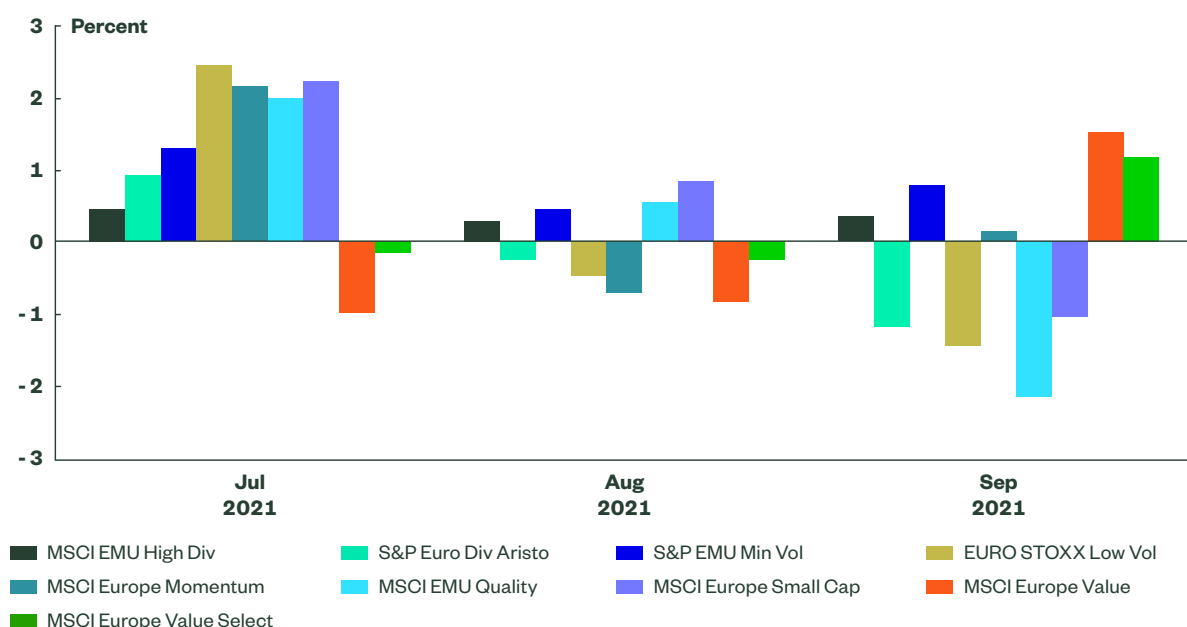
# Eurozone/Europe

In Q3, European equities opened the gap with global equities. In September, the EURO STOXX® (-5.31%) and MSCI Europe (-4.95%) indices were hit hard by the pullback. These regional benchmarks both lost more than 3% for the quarter.

The MSCI Europe Value Select Index (-2.29%) outperformed the EURO STOXX® 0.95% in Q3 2021. The simple MSCI Value Index (-2.5%) produced similar results, albeit not as strong as select value on a relative performance basis, providing further benefit for investors playing the re-opening trade.

Volatility provided some protection for investors but, impressively, value factor strategies also performed well on a relative basis. Defensive factors remained in demand by European investors as the broad indices continued to experience volatility in the recovery.

## Relative Monthly Performance vs. the EURO STOXX® Index



Source: Bloomberg Finance L.P., as of 30 September 2021. Past performance is not a reliable indicator of future performance. Index returns are unmanaged and do not reflect the deduction of any fees or expenses. See Appendix for index details.

**Looking Forward.** While European equities were weaker in Q3, the gap with global equities presents an interesting value opportunity. The divergence maintains a compelling relative valuation. The relative opportunity to play the recovery through eurozone equities could be appealing to investors, provided they can protect the portfolio using a selective value or stable dividend approach.

Investors should consider positions in Euro Dividend Aristocrats to play a further economic recovery in 2021, as the enhanced income from stable dividend stocks delivers total return while we await the recovery to reflate earnings. Investors can also continue to play the value factor trade using Europe Value Exposure Select, which utilise the light quality touch (selective) and takes a sector neutral approach in targeting opportunities.

# Smart Beta ETF Flows

---

**Recent flows in both European and US-listed smart beta ETF flows by their relevant factor exposure.**



## Smart Beta ETF Flows

The tables in this section show the nominal net assets gathered by each category, across all geographic regions, over three relevant time periods. The top two and bottom two factor categories in each time period are highlighted.

**Investors continued into dividends while value endured outflows in Q3.** European and US ETF investors continued to take significant steps in positioning portfolios toward factors that stand to benefit more from a resumption of economic activity, with European and US investors also opting for some momentum exposure in September.

US-listed investors continued to pour money into income-generating dividend yield factor strategies. European-listed fund investors are more neutral on dividend ETFs. Investors in both regions appeared to be selling value in Q3, despite flows remaining positive year to date.

## European-Listed Smart Beta Flows

Smart beta flows were negative in September (down \$1 billion) as equity markets experienced a pullback. These September outflows continued throughout the quarter, falling \$6.4 billion total in Q3, but remain positive year to date at \$9.6 billion.

Value has continued to lead all factor exposures year to date, despite over losing \$1 billion in value ETFs in September and dropping \$4.3 billion for the quarter. Quality factor exposures took in \$207 million in September, as investors “chased performance” by using quality to protect the portfolio.

Dividend factor strategies remain neutral in terms of flows. Volatility exposures continue to be the most negative on a year-to-date and trailing 12-month basis, but we saw \$90 million of inflows in September as market volatility set in. Multifactor factor exposures gathered \$170 million in Q3.

### European-Listed Smart Beta Flows (\$ Millions)

Factor Category	September 2021	Trailing 3 months	Year to Date	Last 12 months
Dividend	-3	-321	968	716
Growth	44	152	160	214
Low Volatility	90	-87	-381	-1,435
Momentum	196	-1,330	-36	215
Multifactor	155	170	318	67
Quality	207	1,394	2,401	1,729
Size	-661	-2,021	796	3,929
Value	-1,035	-4,330	5,400	10,272
<b>Total</b>	<b>-1,008</b>	<b>-6,373</b>	<b>9,628</b>	<b>15,708</b>

Source: Bloomberg Finance L.P., as of 30 September 2021. Flows are as of date indicated and shouldn't be relied thereafter.

## US-Listed Smart Beta Flows

Flows into US-listed funds remained focused in pro-recovery factors such as dividend yield, although value experienced outflows in Q3. The \$3.4 billion of inflows in September into dividend ETFs remained a strong sentiment indicator of US-listed ETF investors.

While value ETFs experienced outflows of \$1.2 billion in Q3, they still remain significantly positive for the year at \$11.5 billion, suggesting investors are not even close to reversing on the recovery theme. The consistency with which investors are buying yield-factor dividend ETFs is impressive.

The inflows to dividends occurred as US-listed ETF investors continued to pull assets out of volatility ETFs. Volatility ETFs lost an additional \$630 million in September and \$1.4 billion in Q3, extending the losing streak to 19 consecutive months of net outflows. This was the case with European investors prior to September.

US ETF investors stopped allocating to quality as September produced outflows of \$761 million. Overall, net flows into quality remain positive in 2021 at 2.4 billion. Momentum experienced inflows in September but was flat for the quarter.

Looking ahead, all signs point to a continued recovery in global equities to close 2021, so we will watch to see if the inflows continue to the pro-recovery, factor-based smart beta ETFs.

### US-Listed Smart Beta Flows (\$ Millions)

Factor Category	September 2021	Trailing 3 months	Year to Date	Last 12 months
Dividend	3,353	8,170	31,735	38,157
Growth	-217	-90	1,453	1,698
Low Volatility	-630	-1,433	-15,689	-21,384
Momentum	961	11	1,129	1,307
Multifactor	-250	1,817	1,738	1,955
Quality	-761	2,783	2,350	3,332
Size	-73	33	6,812	10,049
Value	-644	-1,272	11,513	13,980
<b>Total</b>	<b>1,739</b>	<b>10,019</b>	<b>41,041</b>	<b>49,094</b>

Source: Bloomberg Finance L.P., as of 30 September 2021. Flows are as of date indicated and shouldn't be relied thereafter.

# **Institutional Style Flows and Holdings**

---

**A snapshot of the cross-sectional patterns of institutional equity flows and holdings.**

# Institutional Style Positioning

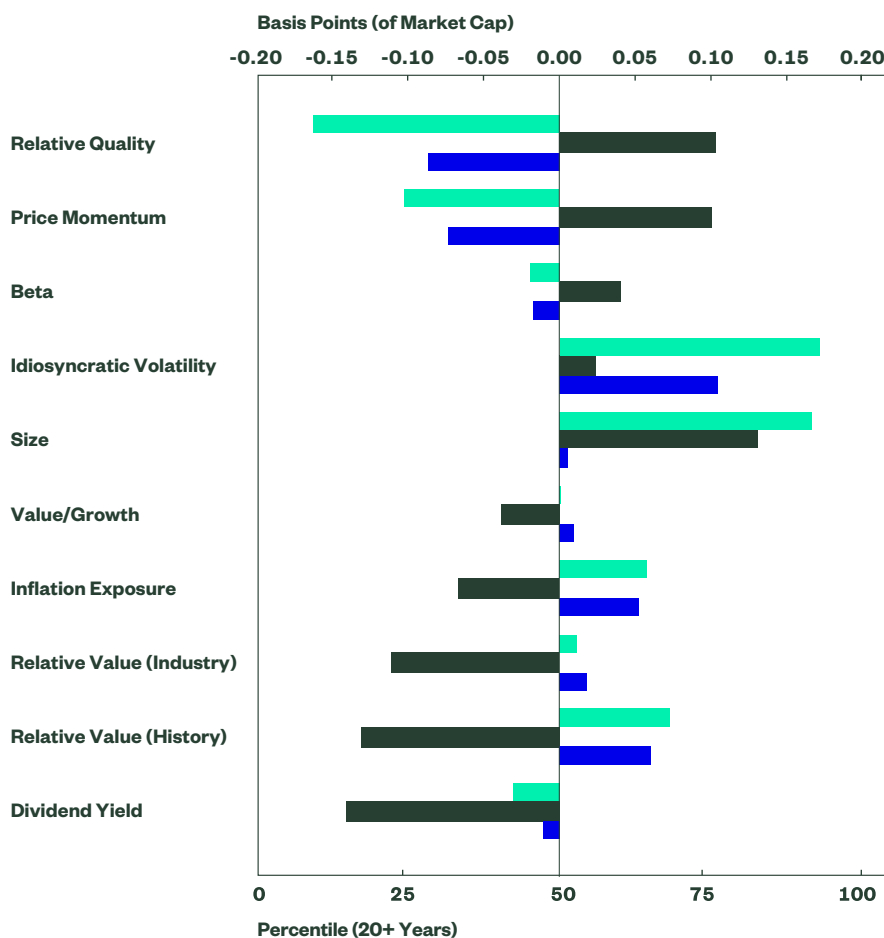
The analysis covers 10 style dimensions; Beta, Idiosyncratic Volatility, Dividend Yield, Inflation Exposure, Value/Growth, Relative Value to History, Relative Value to Industry, Size, Price Momentum and Relative Efficiency (further referred to as Relative Quality). See page 28 for full style definitions.

**Buying the underweight, selling the overweight, positioning for recovery.** The holdings of inflation exposure and value stocks have experienced strong 20-day and 60-day trend inflows, despite being significantly underweight by historical measures.

Dividend yield stocks remain the most significantly underweight and actually have shown mild outflows in their trend. The strongest overweight holdings, compared to historical positioning, have been in quality stocks (higher return on equity), despite the accelerating trend in outflows.

## Institutional Style Positioning (Quarter End)

- Holdings (Lower)
- 20d Flows
- 60d Flows



Source: State Street Global Markets as of 1 October 2021. Flows are as of the date indicated, are subject to change, and should not be relied upon as current thereafter.

# Trend Flows

In addition to the latest investor positioning in each of the significant style dimensions, the active flows trend can provide further context on investor sentiment.

Below we analyse trends in active flows across two time series: daily change in 60-day trend flows over the past year and daily change in 20-day trend flows over the past quarter. Each chart provides context on the trend of investor flows leading up to the quarter-end positioning (see Figure on previous page).

60-day trend flows remained concentrated in Q3, as dispersions across style dimensions were low. Smaller market capitalisation stocks (size) continued to trend more positive in the quarter, following the brief period of net outflows experienced in May. Looking at the shorter term 20-day trend, we can see this strength more clearly as size flows finished the quarter decidedly strong.

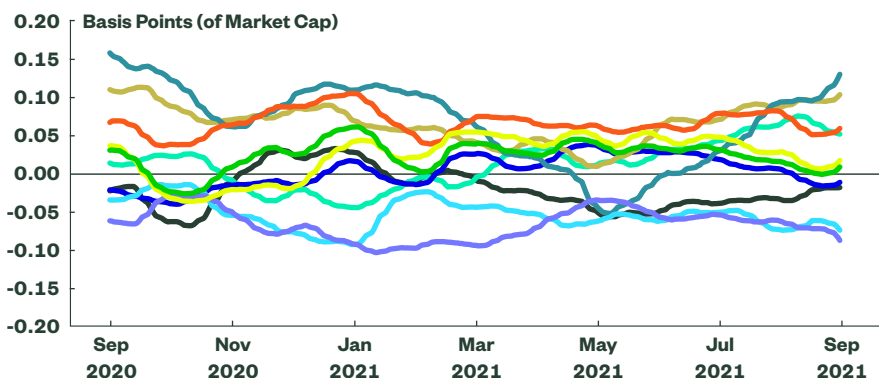
The stocks with high idiosyncratic volatility and attractive relative value (history) have experienced a steadily positive longer-term 60-day and 20-day trend. Investors are clearly buying stocks with higher inflation exposure, as the 60-day flow trend on these stocks remained positive in Q3. Relative quality, beta and price momentum flows were all negative on both the 60-day and 20-day trends. The selling of these style dimensions occurred despite each style ending the quarter overweight.

## Global Equity

### Active Flow

(60d Flow Trend, Last 1 Year)

- Beta
- Inflation Exposure
- Dividend Yield
- Idiosyncratic Volatility
- Size
- Price Momentum
- Relative Quality
- Relative Value (History)
- Relative Value (Industry)
- Value/Growth



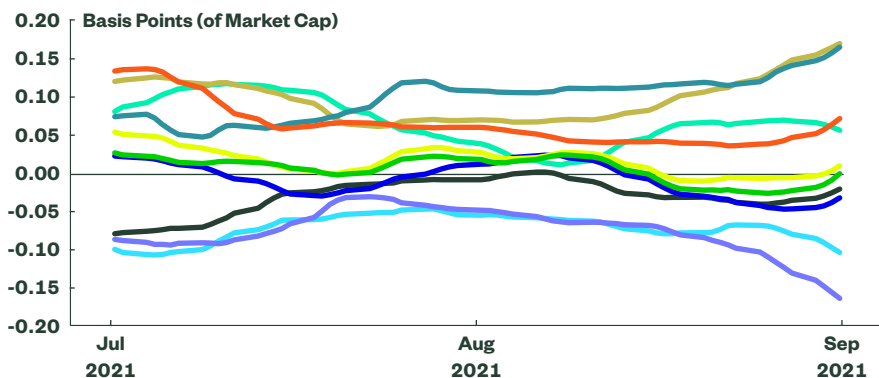
Source: State Street Global Markets as of 1 October 2021. Flows are as of the date indicated, are subject to change, and should not be relied upon as current thereafter. This information should not be considered a recommendation to invest in a particular style. It is not known whether the factors shown will be profitable in the future.

## Global Equity

### Active Flow

(20d Flow Trend, Last Quarter)

- Beta
- Inflation Exposure
- Dividend Yield
- Idiosyncratic Volatility
- Size
- Price Momentum
- Relative Quality
- Relative Value (History)
- Relative Value (Industry)
- Value/Growth



Source: State Street Global Markets, as of 1 October 2021. Flows are as of the date indicated, are subject to change, and should not be relied upon as current thereafter. This information should not be considered a recommendation to invest in a particular style. It is not known whether the factors shown will be profitable in the future.

# Trend Holdings

In addition to the latest investor positioning in each of the significant style dimensions, the historical holdings trend can provide further context on investor sentiment.

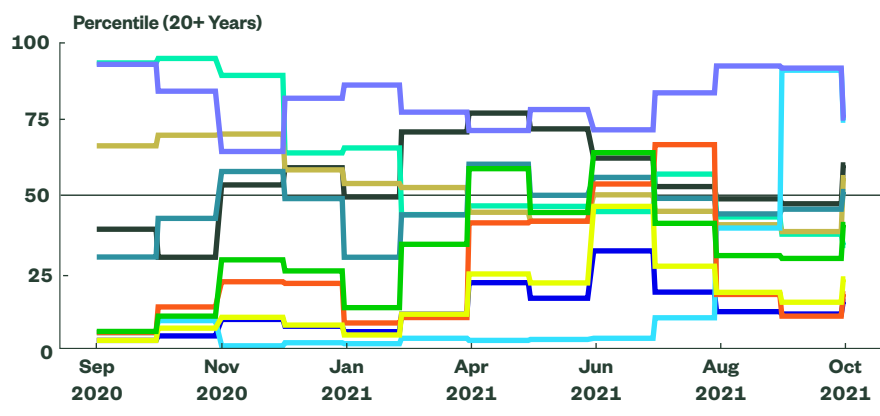
The below time series shows the monthly change in investor holdings over the past year. This chart provides expanded context on the trend of investor holdings leading up to the quarter end positioning (see Figure on page 12).

Holdings in relative value (history) and stocks with higher inflation exposure declined in Q3, after starting the quarter comfortably overweight for the first time in a long time. Dividend yield stocks ended the quarter the most significantly underweight by historical comparison.

Small cap (size) stocks remained neutral throughout the quarter, whereas holdings in momentum stocks were volatile, closing comfortably overweight. Stocks with higher inflation exposure went from overweight at the beginning of Q3 to underweight in October, despite positive inflows. Holdings in relative quality stocks maintained their overweight positioning during Q3, despite strong outflows. This suggests the rally experienced in quality stocks has continued to outpace the profit-taking of investor outflows.

## Global Equity Monthly Holdings (Last 1 Year)

- Beta
- Inflation Exposure
- Dividend Yield
- Idiosyncratic Volatility
- Size
- Price Momentum
- Relative Quality
- Relative Value (History)
- Relative Value (Industry)
- Value/Growth



Source: State Street Global Markets as of 1 October 2021.

## Global Equity Holdings (Last Quarter)

	July 2021		August 2021		September 2021		October 2021	
Overweight	Relative Quality	0.84	Relative Quality	0.93	Relative Quality	0.93	Relative Quality	0.76
	Relative Value (History)	0.67			Price Momentum	0.92	Price Momentum	0.75
	Inflation Exposure	0.57					Beta	0.60
	Beta	0.53					Idiosyncratic Volatility	0.56
							Size	0.51
Underweight	Size	0.49	Beta	0.49	Beta	0.47	Value/Growth	0.40
	Idiosyncratic Volatility	0.45	Size	0.44	Size	0.46	Inflation Exposure	0.33
	Value/Growth	0.41	Inflation Exposure	0.43	Idiosyncratic Volatility	0.38	Relative Value (Industry)	0.22
	Relative Value (Industry)	0.27	Idiosyncratic Volatility	0.40	Inflation Exposure	0.37	Relative Value (History)	0.17
	Dividend Yield	0.18	Price Momentum	0.39	Value/Growth	0.29	Dividend Yield	0.15
	Price Momentum	0.09	Value/Growth	0.30	Relative Value (Industry)	0.15		
			Relative Value (Industry)	0.18	Dividend Yield	0.11		
			Relative Value (History)	0.17	Relative Value (History)	0.10		
		Dividend Yield	0.11					

Source: State Street Global Markets as of 1 October 2021.

# Factor Fundamentals

---

**Fundamental metrics of specific factor-driven indices that are tracked by relevant European-listed smart beta ETFs.**

# Fundamental Factor Metrics

As of 30 September 2021

For context the table includes popular market capitalisation-weighted benchmarks in each of the three critical geographic regions: World/Global, USA and Eurozone/Europe.

Region/Index	Price-to-Earnings	Price-to-Book	EV-to-EBITDA	ROE	Dividend Yield
<b>World/Global Factors</b>					
<b>MSCI World Index*</b>	<b>18.49</b>	<b>3.03</b>	<b>12.44</b>	<b>14.95</b>	<b>1.87</b>
<b>STOXX® Global 1800 Index*</b>	<b>18.79</b>	<b>2.99</b>	<b>12.68</b>	<b>14.70</b>	<b>1.89</b>
MSCI World High Div	13.30	2.49	9.81	17.71	3.73
S&P Global Div Aristo	11.78	1.26	8.62	10.98	4.92
MSCI World Min Vol	19.39	3.15	8.85	12.82	2.08
STOXX Global Low Vol	18.37	2.81	12.60	15.53	3.06
MSCI World Momentum	16.61	2.83	11.41	15.99	1.68
MSCI World Quality	22.26	6.99	15.38	42.42	1.42
MSCI World Small Cap*	18.88	1.10	11.54	14.45	1.72
MSCI World Value	13.69	1.92	9.50	10.99	2.99
<b>USA Factors</b>					
<b>S&amp;P 500® Index*</b>	<b>20.08</b>	<b>4.31</b>	<b>13.71</b>	<b>27.91</b>	<b>1.41</b>
<b>MSCI USA Index*</b>	<b>20.74</b>	<b>4.42</b>	<b>14.35</b>	<b>28.03</b>	<b>1.36</b>
S&P US Div Aristo	15.82	2.30	10.57	14.90	3.07
S&P US Min Vol	21.54	4.44	14.54	24.79	1.72
S&P US Low Vol	19.61	3.91	13.59	21.77	2.34
MSCI USA Momentum	18.94	3.21	13.64	12.24	0.87
MSCI USA Quality	22.95	7.96	16.40	44.73	1.08
US Small Cap*	26.53	1.86	15.85	100.86	1.34
MSCI USA Value	15.49	2.75	11.05	16.26	2.36
<b>Eurozone/Europe Factors</b>					
<b>EURO STOXX® Index*</b>	<b>15.69</b>	<b>1.82</b>	<b>9.85</b>	<b>9.63</b>	<b>2.83</b>
<b>MSCI Europe Index*</b>	<b>14.97</b>	<b>2.01</b>	<b>9.60</b>	<b>9.93</b>	<b>3.13</b>
S&P Euro Div Aristo	14.79	1.77	9.50	11.44	3.66
MSCI EMU Min Vol	18.31	2.18	10.75	9.58	2.78
EURO STOXX Low Vol	17.50	1.98	11.30	12.24	3.81
MSCI Europe Momentum	12.75	1.77	8.06	10.14	3.53
MSCI Europe Small Cap*	17.67	0.47	10.28	11.43	2.34
MSCI Europe Value	10.94	1.26	6.92	9.23	4.64

Source: Bloomberg Finance L.P., as of 30 September 2021. See Appendix for index details. \*Market cap-weighted index.



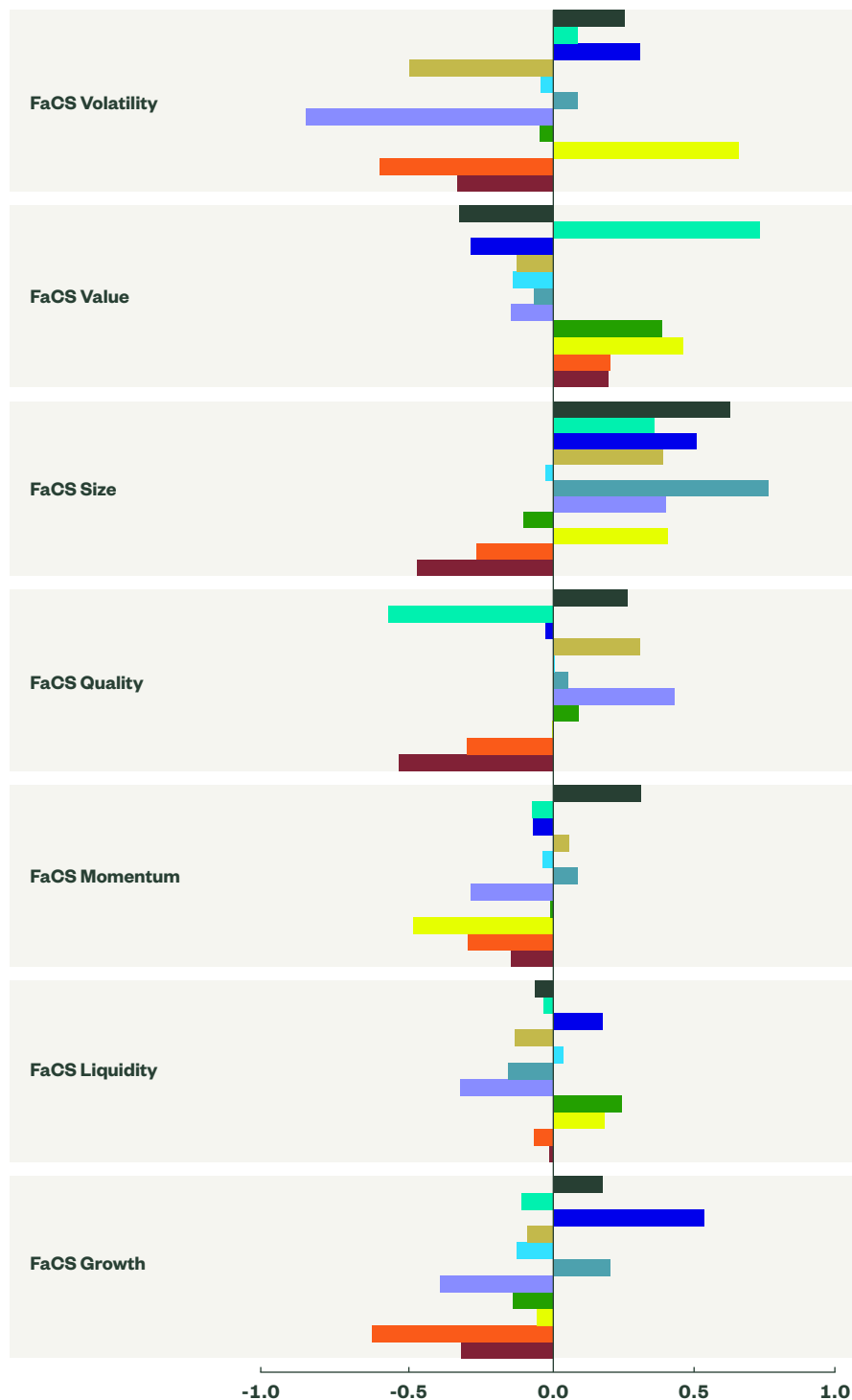
# Market Factor Exposure

As of 1 October 2021

The following charts show the baseline factor exposure in each capitalisation-weighted benchmark for the three critical geographic regions: World, USA and Europe. The percentages in the legend represent the relative weight of each sector in the benchmark.

## Market FaCS Exposure by Sector (MSCI ACWI Index)

- Technology (22.4%)
- Financials (14.39%)
- Consumer Discretionary (12.41%)
- Health Care (11.62%)
- Industrials (9.64%)
- Communication Services (9.34%)
- Consumer Staples (6.73%)
- Materials (4.64%)
- Energy (3.56%)
- Utilities (2.64%)
- Real Estate (2.62%)



Source: MSCI BarraOne, as of 1 October 2021. FaCS stands for MSCI Factor Classification Standards.

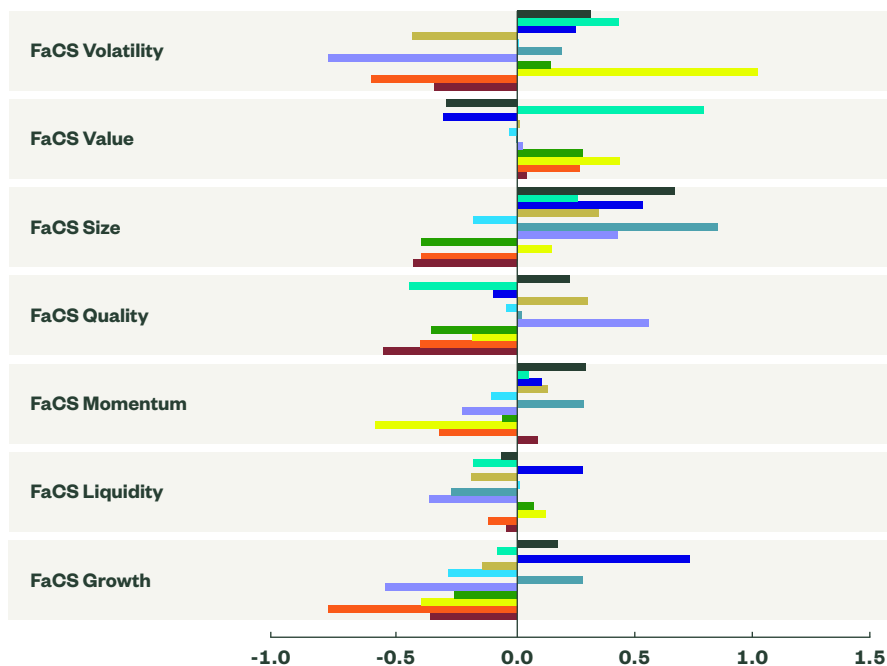
# Market Factor Exposure

As of 1 October 2021

The following charts show the baseline factor exposure in each capitalisation-weighted benchmark for the three critical geographic regions: World, USA and Europe. The percentages in the legend represent the relative weight of each sector in the benchmark.

## Market FaCS Exposure by Sector (MSCI USA Index)

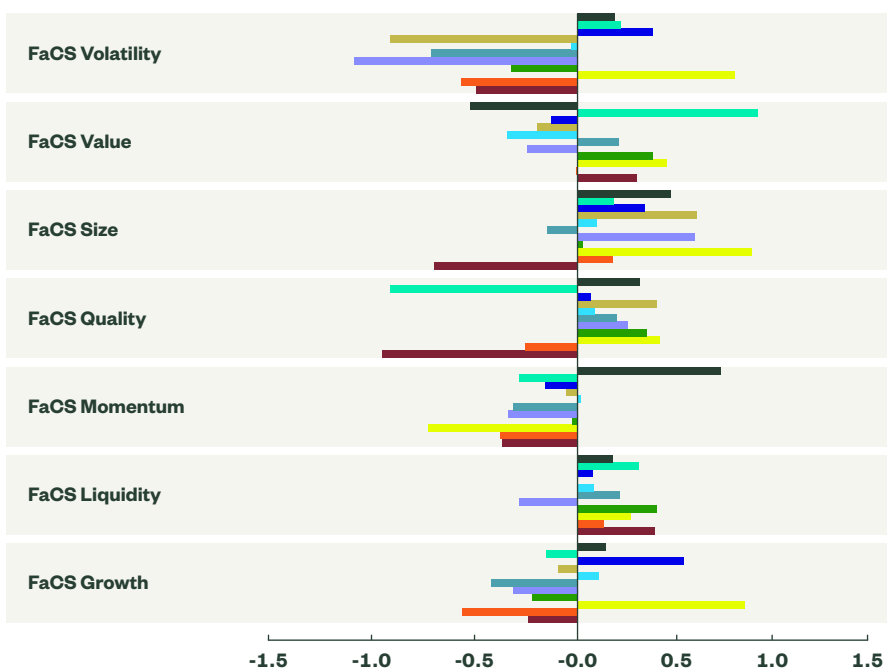
- Technology (28.62%)
- Financials (11.12%)
- Consumer Discretionary (12.22%)
- Health Care (13.04%)
- Industrials (7.99%)
- Communication Services (11.38%)
- Consumer Staples (5.54%)
- Materials (2.43%)
- Energy (2.62%)
- Utilities (2.36%)
- Real Estate (2.69%)



Source: MSCI BarraOne, as of 1 October 2021. FaCS stands for MSCI Factor Classification Standards.

## Market FaCS Exposure by Sector (MSCI Europe Index)

- Technology (8.58%)
- Financials (16.00%)
- Consumer Discretionary (11.79%)
- Health Care (14.36%)
- Industrials (14.84%)
- Communication Services (3.83%)
- Consumer Staples (12.52%)
- Materials (7.80%)
- Energy (4.83%)
- Utilities (4.12%)
- Real Estate (1.33%)



Source: MSCI BarraOne, as of 1 October 2021. FaCS stands for MSCI Factor Classification Standards.

# Factor Correlations

---

**Correlation of returns for specific factor-driven indices that are tracked by relevant European-listed smart beta ETFs.**

## Factor Correlations

The analysis is presented in two distinct correlation matrices. The table on this page shows the correlation of returns for each factor-driven index (“Factors”) against a single cap-weighted market benchmark (“Index”) in three critical geographic regions: World/Global, USA and Eurozone/Europe. The results are displayed in order from strongest correlation to weakest.

**Diversification with Defence and Dividends.** The lowest correlated indices in global equities to the benchmark index are Global Dividend Aristocrats and Global Low Volatility. Low volatility and Dividend Aristocrats generally have a relatively lower correlation to the benchmark index, as compared to min volatility and high dividend respectively. The stable dividend (Aristocrats) and unconstrained (low volatility) exposures tend to offer investors relatively attractive diversification opportunities.

### Factor Correlation Coefficients (Last 3 Years)

r	World/Global	Factors	r	USA	Factors	r	Euro	Factors
0.97	Index	Quality	0.98	Index	Quality	0.98	Index	High Div
0.96	Index	Small Cap	0.97	Index	Min Vol	0.98	Index	Value Select
0.96	Index	Value	0.96	Index	Value	0.97	Index	Value
0.96	Index	High Div	0.95	Index	High Div	0.96	Index	Min Vol
0.95	Index	Momentum	0.94	Index	Value Select	0.96	Index	Div Aristo
0.94	Index	Value Select	0.94	Index	Div Aristo	0.96	Index	Quality
0.92	Index	Min Vol	0.93	Index	Momentum	0.95	Index	Small Cap
0.89	Index	Div Aristo	0.91	Index	Small Cap	0.93	Index	Low Vol
0.88	Index	Low Vol	0.87	Index	Low Vol	0.88	Index	Momentum

Source: State Street Global Advisors, Bloomberg Finance L.P., as of 30 September 2021.

The second table (see next page) shows the correlation of the excess returns for every potential combination of factor-driven indices that are tracked by relevant European-listed Smart Beta ETFs. The excess returns are calculated using a single cap-weighted market benchmark in three critical geographic regions: World/Global, USA and Eurozone/Europe. A larger positive number indicates that the correlation of excess returns is strong and directionally consistent. A larger negative number indicates that the correlation of excess returns is strong but directionally inconsistent. A smaller positive or negative number indicates that the correlation of excess returns is not strong. The results are displayed in numerical order from highest (positive) to lowest (negative).

**Global/World.** Dividend Aristocrats and value have the second strongest correlation of excess returns (0.84), trailing only min/low volatility. Substituting in Value Select for value would have significantly reduced (-0.26) the correlation of excess returns to Dividend Aristocrats.

**USA.** The strongest negatively correlated factor pairs, in terms of excess returns, is between momentum and value strategies in US equities. Substituting in Value Select for value would have significantly reduced (-0.25) the correlation of excess returns to Dividend Aristocrats.

**Eurozone/Europe.** The correlation of excess returns of high dividend and Dividend Aristocrats strategies is relatively low (0.48) in the past 3 years, compared to US and global equities. Dividend Aristocrats and Value Select are among the least correlated factors (0.10) in terms of excess returns, providing a good diversification opportunity.

# Factor Correlations (cont'd)

Factor Pairs Correlation Coefficient of Excess Returns (Last 3 Years)

r	World/Global	Factors	r	USA	Factors	r	Euro	Factors
0.91	Min Vol	Low Vol	0.87	Div Aristo	Value	0.83	Value	Value Select
0.84	Div Aristo	Value	0.82	Min Vol	Low Vol	0.82	High Div	Min Vol
0.75	Value	Value Select	0.77	Value	Value Select	0.75	Low Vol	Momentum
0.65	High Div	Min Vol	0.74	High Div	Div Aristo	0.75	Min Vol	Low Vol
0.58	Div Aristo	Value Select	0.72	High Div	Value	0.70	Momentum	Quality
0.57	High Div	Value	0.70	Small Cap	Value Select	0.58	Min Vol	Momentum
0.57	High Div	Low Vol	0.62	High Div	Min Vol	0.56	Div Aristo	Low Vol
0.47	Div Aristo	Small Cap	0.62	High Div	Low Vol	0.50	Low Vol	Quality
0.43	High Div	Value Select	0.62	Div Aristo	Value Select	0.48	High Div	Div Aristo
0.42	High Div	Div Aristo	0.36	Div Aristo	Low Vol	0.46	High Div	Low Vol
0.38	Min Vol	Quality	0.31	Small Cap	Value	0.41	Div Aristo	Min Vol
0.37	Momentum	Quality	0.31	High Div	Value Select	0.36	Min Vol	Quality
0.36	Min Vol	Momentum	0.30	Div Aristo	Small Cap	0.27	Div Aristo	Small Cap
0.34	Small Cap	Value	0.29	Low Vol	Value	0.25	High Div	Value Select
0.28	Small Cap	Value Select	0.23	Div Aristo	Min Vol	0.25	High Div	Value
0.28	Low Vol	Momentum	0.21	Min Vol	Value	0.23	Div Aristo	Momentum
0.16	Div Aristo	Low Vol	0.15	Min Vol	Quality	0.23	High Div	Momentum
0.12	Low Vol	Quality	0.11	Low Vol	Momentum	0.17	Div Aristo	Value
0.07	Low Vol	Value	0.05	Momentum	Quality	0.16	Small Cap	Value Select
0.03	High Div	Quality	-0.01	Min Vol	Momentum	0.15	Momentum	Small Cap
-0.04	Div Aristo	Min Vol	-0.05	High Div	Quality	0.10	Quality	Small Cap
-0.06	Min Vol	Value	-0.05	Low Vol	Quality	0.10	Div Aristo	Value Select
-0.17	Low Vol	Value Select	-0.07	Momentum	Small Cap	0.10	Low Vol	Small Cap
-0.20	Min Vol	Value Select	-0.20	High Div	Small Cap	0.02	High Div	Quality
-0.29	High Div	Momentum	-0.21	Low Vol	Value Select	0.01	Div Aristo	Quality
-0.34	Momentum	Small Cap	-0.23	Min Vol	Value Select	-0.06	Small Cap	Value
-0.34	High Div	Small Cap	-0.40	High Div	Momentum	-0.08	Min Vol	Value
-0.42	Quality	Value Select	-0.41	Div Aristo	Quality	-0.11	Min Vol	Value Select
-0.43	Low Vol	Small Cap	-0.41	Quality	Value	-0.19	Min Vol	Small Cap
-0.59	Min Vol	Small Cap	-0.45	Div Aristo	Momentum	-0.20	High Div	Small Cap
-0.60	Div Aristo	Momentum	-0.46	Low Vol	Small Cap	-0.33	Low Vol	Value
-0.62	Quality	Value	-0.49	Min Vol	Small Cap	-0.42	Low Vol	Value Select
-0.62	Momentum	Value Select	-0.49	Quality	Small Cap	-0.50	Momentum	Value Select
-0.68	Quality	Small Cap	-0.52	Quality	Value Select	-0.50	Momentum	Value
-0.72	Div Aristo	Quality	-0.53	Momentum	Value Select	-0.55	Quality	Value Select
-0.77	Momentum	Value	-0.59	Momentum	Value	-0.63	Quality	Value

Source: State Street Global Advisors, Bloomberg Finance L.P., as of 30 September 2021.

# Implementing Smart Beta Investing

---

**State Street Global Advisors has identified the key considerations for investors in the coming quarter, and how markets can be navigated using SPDR® ETFs.**

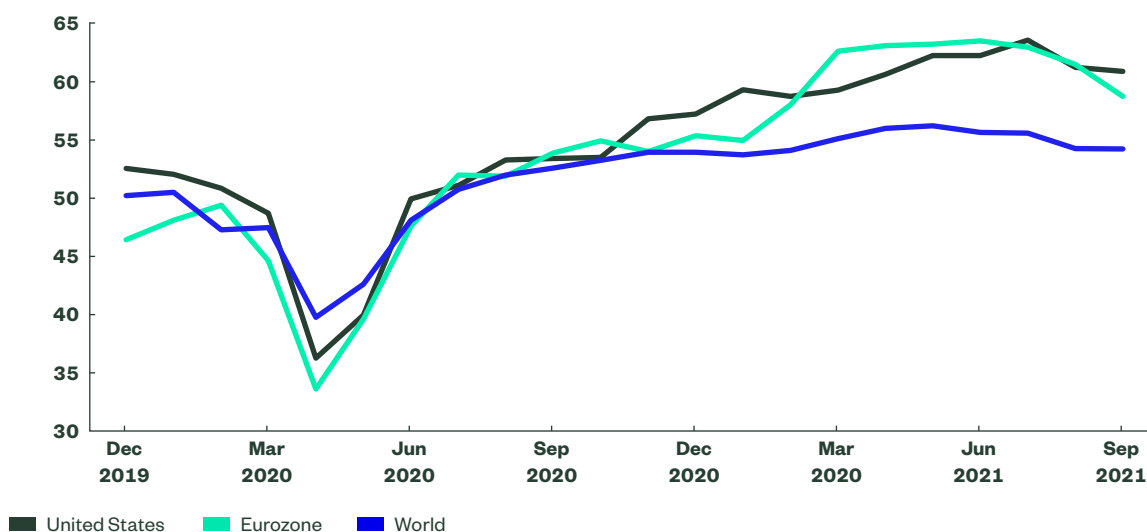
# Implementing Smart Beta Investing

This section contains our market outlook for the coming quarter, as well as the complete listings and recent standard performance for all factor-based, Smart Beta SPDR® ETFs.

## Q4 Market Outlook: Protecting Growth Gains in the New, Post-Pandemic Economy

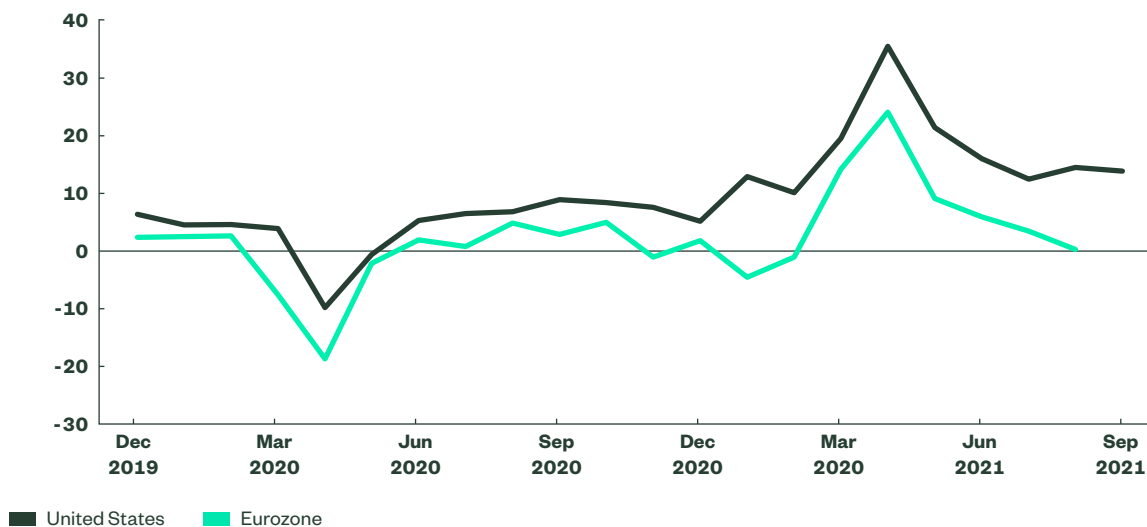
Global economies are well on their way to returning to pre-pandemic levels of production and consumption (Figures 1 and 2). While the supply chains of both goods and labour have remained challenged, the return of consumer confidence brought on by ending lockdowns and returning mobility have helped spur demand. While the dislocation between supply and demand has continued to fuel inflation concerns, central banks globally are signalling a medium-term normalisation of interest rate policy.

**Figure 1: Manufacturing PMI**



Source: Markit Economics, FactSet, as of 30 September 2021. All figures are seasonally adjusted.

**Figure 2: Retail Sales**  
(YoY%, excluding Autos)



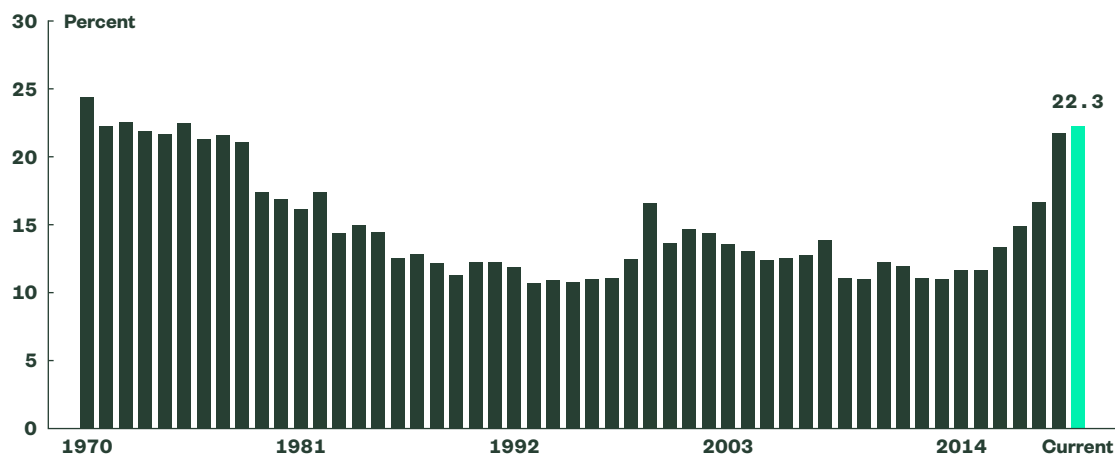
Source: Markit Economics, FactSet, as of 30 September 2021.

In the Q3 market outlook, we highlighted a continued opportunity to play the recovery trade as economic activity was picking up. We expected dividend stocks to follow the rally seen in value stocks during the first half of 2021. While we may have been early to this trade, the longer-term market outlook points toward increased inflation expectations and higher interest rates coming from the economic recovery. Despite the transparency of central banks, investors would be prudent to expect further market volatility on the road to recovery.

Investors who have benefitted from a decade of growth-led asset price expansion, fuelled by easy money policy, could see higher interest rates on the horizon. As such, it may be time to seek ways to protect portfolio growth in the new (post pandemic) economy. We believe this means looking to the diversification benefits of dividends in US and global equities, while emphasising the value play in Europe.

In the years since the US Federal Reserve (“Fed”) returned to its dovish, easy-money, low interest rate environment, US investors have seen growth stocks benefit. This has in part led to the concentration of the S&P 500® index to levels not seen since the 1970s (Figure 3). While this has helped investors who are long the popular US equity benchmark, as we enter Q4 2021 — when the Fed is expected to announce plans to dial back the asset purchases so critical to keeping yields low — investors are evaluating their continued appetite to remain long the “winners” of easy money. The last time the Fed undertook the exercise of raising interest rates (December 2015), it sparked a period of outperformance in dividend stocks (Figure 4).

**Figure 3: Cumulative Weight of Top 5 Names in the S&P 500®**

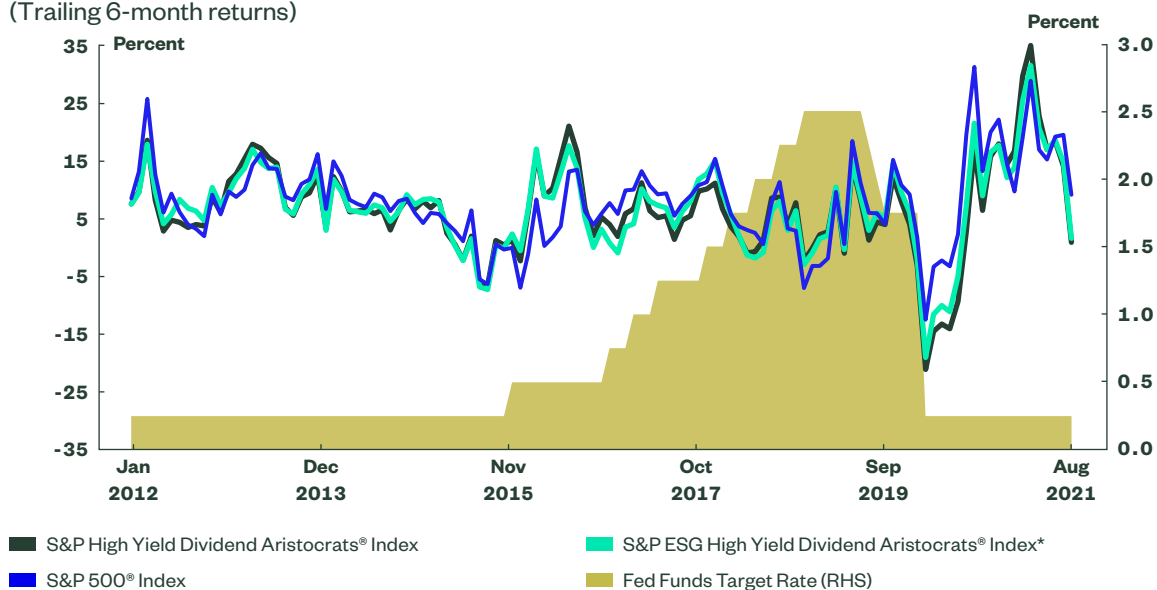


Source: S&P Dow Jones Indices, as of 30 September 2021. Provided for illustrative purposes only.



**Figure 4: Fed Funds Rate and Index Returns**

(Trailing 6-month returns)



Source: Bloomberg Finance L.P., as of 30 September 2021. Index performance based on monthly net total return in USD. \*The S&P ESG High Yield Dividend Aristocrats Index was inceptioned on 1 March 2021. Results prior to this date were calculated by using available data at the time in accordance with the current index methodology. Past performance is no guarantee of future results. It is not possible to invest directly into an index. Index returns are unmanaged and do not reflect the deduction of any fees or expenses. Index returns reflect all items of income, gain and loss and the reinvestment of dividends and other income as applicable.

While investors putting more assets into dividend and value stocks (see flows sections of this document) may have been early, these inflation fears would not suggest they were wrong. We join the consensus view that the inflation is a transitory dislocation between supply and demand as we emerge from a global lockdown. We still expect dividend stocks to perform well as the economic recovery plays out, which was the case in 2016 (Figure 4).

Investors who were early to the dividend trade should be wary of pulling out too soon and not benefit from the full recovery of the global economy. As we head into the end of 2021, investors who are optimistic about the economic momentum behind dividend stocks should consider the SPDR® S&P® U.S. Dividend Aristocrats UCITS ETF and SPDR® S&P® Global Dividend Aristocrats UCITS ETF, which are now also available in ESG versions.\*

In Europe, we continue to favour the valuation opportunity. We believe that the first half of 2021 was just the beginning and that the recovery trade will continue through the end of the year. The advantage that growth stocks experience from ultra-low interest rates may be reduced if yields continue to rise as inflation picks up. The SPDR® Europe Value UCITS ETF aims to offer investors the opportunity to take a selective approach to playing the value recovery trade.\*

\* This information should not be considered a recommendation to invest in a particular security shown.

---

## How Can Investors Navigate These Themes?

Investors seeking a diversified approach to playing the recovery trade through a stable dividend strategy can consider a Dividend Aristocrats allocation in US and global equities, or a selective value approach in European equities. The dividend exposures below are also now available in ESG versions in all three major regions: USA, eurozone and global equities.

- **Global** SPDR® S&P® Global Dividend Aristocrats UCITS ETF

The SPDR® S&P® Global Dividend Aristocrats UCITS ETF seeks to fully replicate the S&P Global Dividend Aristocrats® Quality Income Index, which is designed to measure the performance of high-dividend-yielding companies within the S&P Global BMI that have followed a managed dividends policy of increasing or maintaining dividends for at least 10 consecutive years and simultaneously have positive return on equity and cash flow from operations.

- **USA** SPDR® S&P® U.S. Dividend Aristocrats UCITS ETF

The SPDR® S&P® U.S. Dividend Aristocrats UCITS ETF seeks to fully replicate S&P High Yield Dividend Aristocrats® Index, which is comprised of the stocks of the S&P Composite 1500® Index that have increased dividends every year for at least 20 consecutive years. These stocks have both capital growth and dividend income characteristics, as opposed to stocks that are pure yield, or pure capital oriented.

- **Europe** SPDR® MSCI Europe Value UCITS ETF

The SPDR® MSCI Europe Value UCITS ETF seeks to fully replicate the MSCI Europe Value Exposure Select Index, which is designed to measure the performance of the stocks that exhibit relatively higher value exposure within the MSCI Europe Index while also seeking to avoid poor quality companies, as measured by their fundamental accounting data including return on equity, debt to equity and earnings variability.

## Listings of SPDR ETF Smart Beta Range

Range	ETF	ISIN	AUM (\$mn)	TER	Primary Ticker (Xetra)	LSE (£)	LSE (€)	LSE (\$)	SIX (CHF)	Borsa Italiana (€)	Euronext (€)
Dividend Aristocrats	SPDR® S&P® U.S. Dividend Aristocrats UCITS ETF	IE00B6YX5D40	3,313	0.35	<b>SPYD</b>	USDV			UDVD	USDV	USDV
	SPDR® S&P® Dividend Aristocrats EUR Hdg UCITS ETF	IE00B979GK47	22	0.40	<b>SPPD</b>				USDE	USDE	
	SPDR® S&P® Euro Dividend Aristocrats UCITS ETF	IE00B5M1WJ87	1,807	0.30	<b>SPYW</b>	EUDV	EUDI		EUDV	EUDV	EUDV
	SPDR® S&P® Global Dividend Aristocrats UCITS ETF	IE00B9C0XS71	799	0.45	<b>ZPRG</b>	GBDV			GLDV	GLDV	GLDV
	SPDR® S&P® Pan Asia Dividend Aristocrats UCITS ETF	IE00B9KNR336	207	0.55	<b>ZPRA</b>	PADV			ASDV	PADV	PADV
	SPDR® S&P® UK Dividend Aristocrats UCITS ETF	IE00B6S2Z822	178	0.30	<b>SPYG</b>	UKDV				UKDV	
	SPDR® S&P® Emerging Markets Dividend UCITS ETF	IE00B6YX5B26	109	0.55	<b>SPYV</b>	EMDV			EDVD	EMDV	EMDV
ESG	SPDR® S&P® U.S. Dividend Aristocrats ESG UCITS ETF	IE00BYTH5R14	2	0.35	<b>ZPD6</b>	UGDV			UEDV		UEDV
	SPDR® S&P® Euro Dividend Aristocrats ESG UCITS ETF	IE00BYTH5T38	1	0.30	<b>ZPD9</b>						EEDV
	SPDR® S&P® Global Dividend Aristocrats ESG UCITS ETF	IE00BYTH5S21	2	0.45	<b>ZPD3</b>				GEDV		GEDV
Low Volatility	SPDR® S&P® 500 Low Volatility UCITS ETF	IE00B802KR88	174	0.35	<b>SPY1</b>	USLV			LOWV	LOWV	LOWV
	SPDR® EURO STOXX® Low Volatility UCITS ETF	IE00BFTWP510	92	0.30	<b>ZPRL</b>				ELOW	ELOW	ELOW
	SPDR® STOXX® Global Low Volatility UCITS ETF	IE00BKDVQ787	5	0.30					GLOW		GLOW*
Value	SPDR® MSCI USA Value UCITS ETF	IE00BSPLC520	167	0.20	<b>ZPRU</b>	UVAL			USVL	UVAL	
	SPDR® MSCI USA Small Cap Value Weighted UCITS ETF	IE00BSPLC413	277	0.30	<b>ZPRV</b>				USSC		
	SPDR® MSCI Europe Value UCITS ETF	IE00BSPLC306	29	0.20	<b>ZPRW</b>	EVAL				EVAL	
	SPDR® MSCI Europe Small Cap Value Weighted UCITS ETF	IE00BSPLC298	121	0.30	<b>ZPRX</b>	EUSV					
	SPDR® MSCI World Value UCITS ETF	IE00BJXRT813	42	0.25		VALW			WWAL		WWAL*

Source: State Street Global Advisors, as of 1 October 2021. \*Primary ticker (if not listed on Xetra).

## Standard Performance (%)

Fund/Index Name	1 Month (%)	3 Months (%)	6 Months (%)	Year-to-Date (%)	1 Year (%)	3 Years (%)	5 Years (%)	Since Inception (%)
<b>Inception Date 14/10/2011</b>								
SPDR S&P US Dividend Aristocrats UCITS ETF	-5.17	-3.34	0.78	12.81	30.34	8.87	10.02	12.29
S&P High Yield Dividend Aristocrats Index <sup>1</sup>	-5.18	-3.36	0.75	12.80	30.34	8.73	9.94	12.22
<b>Difference</b>	<b>0.01</b>	<b>0.02</b>	<b>0.03</b>	<b>0.01</b>	<b>0.00</b>	<b>0.14</b>	<b>0.08</b>	<b>0.07</b>
<b>Inception Date 28/02/2012</b>								
SPDR S&P Euro Dividend Aristocrats UCITS ETF	-4.54	0.02	3.16	10.83	19.16	3.11	4.61	7.86
S&P Euro High Yield Dividend Aristocrats Index	-4.59	0.00	2.90	10.50	18.91	2.71	4.20	7.50
<b>Difference</b>	<b>0.05</b>	<b>0.02</b>	<b>0.26</b>	<b>0.33</b>	<b>0.25</b>	<b>0.40</b>	<b>0.41</b>	<b>0.36</b>
<b>Inception Date 15/05/2013</b>								
SPDR S&P Global Dividend Aristocrats UCITS ETF	-2.18	-2.42	1.57	11.30	33.14	3.95	5.25	5.21
S&P Global Dividend Aristocrats Quality Income Index <sup>2</sup>	-2.14	-2.42	1.52	11.36	33.28	3.92	5.26	5.29
<b>Difference</b>	<b>-0.04</b>	<b>0.00</b>	<b>0.05</b>	<b>-0.06</b>	<b>-0.14</b>	<b>0.03</b>	<b>-0.01</b>	<b>-0.08</b>
<b>Inception Date 15/05/2013</b>								
SPDR S&P Pan Asia Dividend Aristocrats UCITS ETF	-1.98	-4.31	-2.69	2.43	14.84	4.43	6.39	5.05
S&P Pan Asia Dividend Aristocrats Index	-1.97	-4.20	-2.39	2.91	15.49	5.02	7.01	5.62
<b>Difference</b>	<b>-0.01</b>	<b>-0.11</b>	<b>-0.30</b>	<b>-0.48</b>	<b>-0.65</b>	<b>-0.59</b>	<b>-0.62</b>	<b>-0.57</b>
<b>Inception Date 28/02/2012</b>								
SPDR S&P UK Dividend Aristocrats UCITS ETF	-4.51	0.65	7.02	9.89	15.89	2.05	1.15	4.96
S&P UK High Yield Dividend Aristocrats Index	-4.56	0.70	7.34	10.31	16.43	2.56	1.65	5.46
<b>Difference</b>	<b>0.05</b>	<b>-0.05</b>	<b>-0.32</b>	<b>-0.42</b>	<b>-0.54</b>	<b>-0.51</b>	<b>-0.50</b>	<b>-0.50</b>
<b>Inception Date 14/10/2011</b>								
SPDR S&P Emerging Markets Dividend Aristocrats UCITS ETF	-3.87	-5.04	-4.21	-1.51	21.99	1.60	4.75	-0.47
S&P Emerging Markets High Yield Dividend Aristocrats Index <sup>3</sup>	-3.83	-4.74	-3.86	-0.54	23.46	2.49	5.98	0.60
<b>Difference</b>	<b>-0.04</b>	<b>-0.30</b>	<b>-0.35</b>	<b>-0.97</b>	<b>-1.47</b>	<b>-0.89</b>	<b>-1.23</b>	<b>-1.07</b>
<b>Inception Date 03/10/2012</b>								
SPDR S&P 500 Low Volatility UCITS ETF	-4.93	0.20	5.47	9.27	14.89	8.87	9.76	10.80
S&P 500 Low Volatility Index	-4.95	0.21	5.49	9.27	14.89	8.92	9.78	10.82
<b>Difference</b>	<b>0.02</b>	<b>-0.01</b>	<b>-0.02</b>	<b>0.00</b>	<b>0.00</b>	<b>-0.05</b>	<b>-0.02</b>	<b>-0.02</b>
<b>Inception Date 24/03/2014</b>								
SPDR EURO STOXX Low Volatility UCITS ETF	-4.70	1.06	7.47	10.60	15.97	4.28	6.14	7.94
EUROSTOXX Low Risk Weighted 100 Index	-4.86	0.98	7.23	10.36	15.76	3.98	5.89	7.70
<b>Difference</b>	<b>0.16</b>	<b>0.08</b>	<b>0.24</b>	<b>0.24</b>	<b>0.21</b>	<b>0.30</b>	<b>0.25</b>	<b>0.24</b>
<b>Inception Date 24/08/2020</b>								
SPDR STOXX Global Low Volatility UCITS ETF	-4.42	-0.10	5.45	6.54	12.55	N/A	N/A	10.07
STOXX Global Low Risk Weighted Diversified 200 Index	-4.41	-0.01	5.47	6.57	12.62	N/A	N/A	10.19
<b>Difference</b>	<b>-0.01</b>	<b>-0.09</b>	<b>-0.02</b>	<b>-0.03</b>	<b>-0.07</b>	<b>-</b>	<b>-</b>	<b>-0.12</b>

Source: State Street Global Advisors, as of 30 September 2021. Past performance is not a reliable indicator of future performance. Investment return and principal value will fluctuate, so you may have a gain or loss when shares are sold. Current performance may be higher or lower than that quoted. All results are historical and assume the reinvestment of dividends and capital gains. The performance data do not take account of the commissions and costs incurred on the issue and redemption, or purchases and sale, of units. Visit [ssga.com](http://ssga.com) for most recent month-end performance. Index returns are unmanaged and do not reflect the deduction of any fees or expenses. Performance returns for periods of less than one year are not annualised. Some of the products are not available to investors in certain jurisdictions. Please contact your relationship manager in regards to availability. Index returns reflect all items of income, gain and loss and the reinvestment of dividends and other income as applicable.

<sup>1</sup>Returns are for the unhedged share class. The fund is also available in a EUR-hedged share class (launched on 17 June 2019).

<sup>2</sup>Index returns reflect the S&P Global Dividend Aristocrats Index prior to 31st January 2020, when the fund changed to tracking current benchmark.

<sup>3</sup>Index returns reflect the S&P Emerging Markets Dividend Opportunities Index prior to 7th February 2020, when the fund changed to tracking current benchmark.

<sup>4</sup>Index returns reflect the MSCI USA Value Weighted Index prior to 11th July 2018, when the fund changed to tracking current benchmark.

<sup>5</sup>Index returns reflect the MSCI Europe Value Weighted Index prior to 11th July 2018, when the fund changed to tracking current benchmark.

## Standard Performance (%) (cont'd)

Fund/Index Name	1 Month (%)	3 Months (%)	6 Months (%)	Year-to-Date (%)	1 Year (%)	3 Years (%)	5 Years (%)	Since Inception (%)
<b>Inception Date 03/09/2020</b>								
SPDR MSCI World Value UCITS ETF	-1.78	-0.89	1.98	14.24	32.81	N/A	N/A	27.22
MSCI World Value Exposure Select Index	-1.77	-0.90	1.98	14.27	32.86	N/A	N/A	27.28
<b>Difference</b>	<b>-0.01</b>	<b>0.01</b>	<b>0.00</b>	<b>-0.03</b>	<b>-0.05</b>	<b>-</b>	<b>-</b>	<b>-0.06</b>
<b>Inception Date 18/02/2015</b>								
SPDR MSCI USA Value UCITS ETF	-3.74	-2.61	0.97	17.89	38.03	8.75	11.49	9.05
MSCI USA Value Exposure Select Index <sup>4</sup>	-3.74	-2.65	0.91	17.81	37.92	8.55	11.36	8.93
<b>Difference</b>	<b>0.00</b>	<b>0.04</b>	<b>0.06</b>	<b>0.08</b>	<b>0.11</b>	<b>0.20</b>	<b>0.13</b>	<b>0.12</b>
<b>Inception Date 18/02/2015</b>								
SPDR MSCI USA Small Cap Value Weighted UCITS ETF	-1.91	-2.08	3.45	28.05	74.51	11.26	12.30	9.31
MSCI USA Small Cap Value Weighted Index	-1.89	-2.03	3.53	28.32	75.04	11.54	12.54	9.57
<b>Difference</b>	<b>-0.02</b>	<b>-0.05</b>	<b>-0.08</b>	<b>-0.27</b>	<b>-0.53</b>	<b>-0.28</b>	<b>-0.24</b>	<b>-0.26</b>
<b>Inception Date 18/02/2015</b>								
SPDR MSCI Europe Value UCITS ETF	-2.16	1.44	5.52	19.48	38.86	5.60	7.33	3.85
MSCI Europe Value Exposure Select Index <sup>5</sup>	-2.19	1.44	5.37	19.44	38.96	5.50	7.20	3.65
<b>Difference</b>	<b>0.03</b>	<b>0.00</b>	<b>0.15</b>	<b>0.04</b>	<b>-0.10</b>	<b>0.10</b>	<b>0.13</b>	<b>0.20</b>
<b>Inception Date 18/02/2015</b>								
SPDR MSCI Europe Small Cap Value Weighted UCITS ETF	-2.76	2.82	7.24	23.73	52.79	8.23	8.62	6.31
MSCI Europe Small Cap Value Weighted Index	-2.76	3.03	7.50	24.13	53.65	8.48	8.91	6.53
<b>Difference</b>	<b>0.00</b>	<b>-0.21</b>	<b>-0.26</b>	<b>-0.40</b>	<b>-0.86</b>	<b>-0.25</b>	<b>-0.29</b>	<b>-0.22</b>

Source: State Street Global Advisors, as of 30 September 2021. Past performance is not a reliable indicator of future performance. Investment return and principal value will fluctuate, so you may have a gain or loss when shares are sold. Current performance may be higher or lower than that quoted. All results are historical and assume the reinvestment of dividends and capital gains. The performance data do not take account of the commissions and costs incurred on the issue and redemption, or purchases and sale, of units. Visit [ssga.com](http://ssga.com) for most recent month-end performance. Index returns are unmanaged and do not reflect the deduction of any fees or expenses. Performance returns for periods of less than one year are not annualised. Some of the products are not available to investors in certain jurisdictions. Please contact your relationship manager in regards to availability. Index returns reflect all items of income, gain and loss and the reinvestment of dividends and other income as applicable.

<sup>1</sup> Returns are for the unhedged share class. The fund is also available in a EUR-hedged share class (launched on 17 June 2019).

<sup>2</sup> Index returns reflect the S&P Global Dividend Aristocrats Index prior to 31st January 2020, when the fund changed to tracking current benchmark.

<sup>3</sup> Index returns reflect the S&P Emerging Markets Dividend Opportunities Index prior to 7th February 2020, when the fund changed to tracking current benchmark.

<sup>4</sup> Index returns reflect the MSCI USA Value Weighted Index prior to 11th July 2018, when the fund changed to tracking current benchmark.

<sup>5</sup> Index returns reflect the MSCI Europe Value Weighted Index prior to 11th July 2018, when the fund changed to tracking current benchmark.

---

## Contributors

**Ryan Reardon**  
Senior Smart Beta ETF Strategist

---

## Methodologies

**Style** This document generally uses the term *Style* to refer to categorical stock characteristics which can be measured (see Style Definitions).

**Factor** This document generally uses the term *Factor* to refer to specific categorical stock characteristics which have been studied extensively in academia for having the potential to explain portfolio returns such as value, quality, size, momentum, volatility and dividend yield.

**Smart Beta** This document generally uses the term *Smart Beta* to refer to indexing strategies which are non-market capitalisation (Beta) weighted.

**Institutional Style Positioning.** As part of State Street, we have access to information gleaned from our large global custody business. By aggregating \$39 trillion of financial assets, we can observe behavioural trends of this important investor constituent.<sup>1</sup> This includes not only the direction of flows, but also the relative positioning of portfolios. These metrics are generated from regression analysis based on aggregated and anonymous flow data in order to better capture investor preference and to ensure the safeguarding of client confidentiality.

**Institutional Holdings Trend** Measure investors' actual positions over and above the neutral positions embedded in their benchmarks. The figures are shown as percentiles and represent the investor holdings at month-end versus the last 20+ years (data since March 1998). This approach provides perspective on the size of holdings compared with their historical trends, whereas a single, dollar figure provides less context; 100% represents the largest holding whilst 0% is the lowest holding.

**Active Flows Trend** Indicates the value of net buying by large institutional investors (buys minus sells) expressed in terms of basis points of market capitalisation. These are flows in addition to the purchases or sales driven by shareholders allocating to the benchmark.

**Style Definitions** The table below explains the methodology behind each style dimension.

<b>Beta</b>	Regression coefficient in Capital Asset Pricing Model ("CAPM")
<b>Inflation Exposure</b>	Correlation between stock return and implied Consumer Price Index ("CPI")
<b>Dividend Yield</b>	Dividend Yield
<b>Idiosyncratic Volatility</b>	Standard deviation of residuals in Capital Asset Pricing Model ("CAPM")
<b>Size</b>	Market capitalisation
<b>Price Momentum</b>	9-month price return
<b>Relative Efficiency (referenced as Relative Quality)</b>	Return-on-equity minus industry median return-on-equity
<b>Relative Value (History)</b>	Book-to-market of stock vs. average historical book-to-market
<b>Relative Value (Industry)</b>	Book-to-market of stock vs. industry median book-to-market
<b>Value/Growth</b>	Book-to-market

---

## Methodologies (cont'd)

**Index Definitions** The table below details the indexes used in this document.

<b>MSCI World Index</b>	MSCI World Net Total Return USD Index
<b>STOXX Global 1800 Index</b>	STOXX Global 1800 Index USD
<b>MSCI World High Div</b>	MSCI World High Dividend Yield Net Total Return Index
<b>S&amp;P Global Div Aristo</b>	S&P Global Dividend Aristocrats Quality Income Index (USD) NTR
<b>MSCI World Min Vol</b>	MSCI World Minimum Volatility Net Total Return USD Index
<b>STOXX Global Low Vol</b>	STOXX Global Low Risk Weighted Diversified 200 Net Return USD
<b>MSCI World Momentum</b>	MSCI World Momentum Net Total Return USD Index
<b>MSCI World Quality</b>	MSCI World Quality Net Total Return USD Index
<b>MSCI World Small Cap</b>	MSCI World Small Cap Net Total Return USD Index
<b>MSCI World Value</b>	MSCI World Value Net Total Return USD Index
<b>MSCI World Value Select</b>	MSCI World Value Exposure Select Net Return USD Index
<b>S&amp;P 500 Index</b>	S&P 500 Net Total Return Index
<b>MSCI USA Index</b>	MSCI USA Net Total Return USD Index
<b>MSCI USA High Div</b>	MSCI USA High Dividend Yield Net Total Return USD Index
<b>S&amp;P US Div Aristo</b>	S&P High Yield Dividend Aristocrats Net Total Return Index
<b>S&amp;P US Min Vol</b>	S&P 500 Minimum Volatility Net Total Return Index
<b>S&amp;P US Low Vol</b>	S&P 500 Low Vol Net Total Return Index
<b>MSCI USA Momentum</b>	MSCI USA Momentum USD Net Total Return Total Return Index
<b>MSCI USA Quality</b>	MSCI USA Quality Net Total Return USD Index
<b>US Small Cap</b>	Russell 2000 Net 30% Return
<b>MSCI USA Value</b>	MSCI USA Value Net Total Return USD Index
<b>MSCI USA Value Select</b>	MSCI USA Value Exposure Select Net Return USD Index
<b>EURO STOXX Index</b>	EURO STOXX Net Return EUR
<b>MSCI Europe Index</b>	MSCI Europe Net Total Return EUR Index
<b>MSCI EMU High Div</b>	MSCI EMU High Dividend Yield Net Total Return Local Index
<b>S&amp;P Euro Div Aristo</b>	S&P Euro HIGH YIELD Dividend Aristocrats Net Total Return
<b>MSCI EMU Min Vol</b>	MSCI EMU Minimum Volatility Optimised In EUR Net Total Return Local Index
<b>EURO STOXX Low Vol</b>	EURO STOXX Low Risk Weighted 100 Index
<b>MSCI Europe Momentum</b>	MSCI EUROPE MOMENTUM Net EUR Index
<b>MSCI EMU Quality</b>	MSCI EMU Quality Net Return EUR Index
<b>MSCI Europe Small Cap</b>	MSCI Europe Small Cap Net Return EUR Index
<b>MSCI Europe Value</b>	MSCI Europe Value Net Total Return EUR Index
<b>MSCI Europe Value Select</b>	MSCI Europe Value Exposure Select Net Return EUR Index

---

## Endnotes

- 1 Source: State Street, as of 31 December 2020.

---

## About State Street Global Advisors

For four decades, State Street Global Advisors has served the world's governments, institutions and financial advisors. With a rigorous, risk-aware approach built on research, analysis and market-tested experience, we build from a breadth of active and index strategies to create cost-effective solutions. As stewards, we help portfolio companies see that what is fair for people and sustainable for the planet can deliver long-term performance. And, as pioneers in index, ETF, and ESG investing, we are always inventing new ways to invest. As a result, we have become the world's fourth-largest asset manager\* with US \$3.86 trillion<sup>†</sup> under our care.

---

\* Pensions & Investments Research Center, as of 31 December 2020.

<sup>†</sup> This figure is presented as of 30 September 2021 and includes approximately \$59.84 billion of assets with respect to SPDR products for which State Street Global Advisors Funds Distributors, LLC (SSGA FD) acts solely as the marketing agent. SSGA FD and State Street Global Advisors are affiliated.



**Information Classification:  
General Access.**

**Marketing communication.**

**For professional clients only. For qualified investors according to Article 10(3) and (3ter) of the Swiss Collective Investment Schemes Act ("CISA") and its implementing ordinance, at the exclusion of qualified investors with an opting-out pursuant to Art. 5(1) of the Swiss Federal Law on Financial Services ("FinSA") and without any portfolio management or advisory relationship with a financial intermediary pursuant to Article 10(3ter) CISA ("Excluded Qualified Investors") only.**

**For Investors in Austria:** The offering of SPDR ETFs by the Company has been notified to the Financial Markets Authority (FMA) in accordance with section 139 of the Austrian Investment Funds Act. Prospective investors may obtain the current sales Prospectus, the articles of incorporation, the KIID as well as the latest annual and semi-annual report free of charge from State Street Global Advisors Europe Limited, Branch in Germany, Briener Strasse 59, D-80333 Munich. T: +49 (0)89-55878-400. F: +49 (0)89-55878-440.

**For Investors in Finland:** The offering of funds by the Companies has been notified to the Financial Supervision Authority in accordance with Section 127 of the Act on Common Funds (29.11.1999/48) and by virtue of confirmation from the Financial Supervision Authority the Companies may publicly distribute its Shares in Finland. Certain information and documents that the Companies must publish in Ireland pursuant to applicable Irish law are translated into Finnish and are available for Finnish investors by contacting State Street Custodial Services (Ireland) Limited, 78 Sir John Rogerson's Quay, Dublin 2, Ireland.

**For Investors in France:** This document does not constitute an offer or request to purchase shares in the Company. Any subscription for shares shall be made in accordance with the terms and conditions specified in the complete Prospectus, the KIID, the addenda as well as the Company Supplements. These documents are available from the Company centralising correspondent: State Street Banque S.A., Coeur Défense – Tour A – La Défense 4 33e étage 100, Esplanade du Général de Gaulle 92 932 Paris La Défense cedex France or on the French part of the site [ssga.com/etfs](http://ssga.com/etfs). The Company is an undertaking for collective investment in transferable securities (UCITS) governed by Irish law and accredited by the Central Bank of Ireland as a UCITS in accordance with European Regulations. European Directive no. 2014/49/EU dated 23 July 2014 on UCITS, as amended, established common rules pursuant to the cross-border marketing of UCITS with which they duly comply. This common base does not exclude

differentiated implementation. This is why a European UCITS can be sold in France even though its activity does not comply with rules identical to those governing the approval of this type of product in France. The offering of these compartments has been notified to the Autorité des Marchés Financiers (AMF) in accordance with article L214-2-2 of the French Monetary and Financial Code.

**For Investors in Germany:** The offering of SPDR ETFs by the Companies has been notified to the Bundesanstalt für Finanzdienstleistungsaufsicht (BaFin) in accordance with section 312 of the German Investment Act. Prospective investors may obtain the current sales Prospectuses, the articles of incorporation, the KIIDs as well as the latest annual and semi-annual report free of charge from State Street Global Advisors Europe Limited, Branch in Germany, Briener Strasse 59, D-80333 Munich. T: +49 (0)89-55878-400. F: +49 (0)89-55878-440.

**Ireland Entity:** State Street Global Advisors Europe Limited is regulated by the Central Bank of Ireland. Registered office address 78 Sir John Rogerson's Quay, Dublin 2. Registered Number: 49934. T: +353 (0)1 776 3000. F: +353 (0)1 776 3300.

**Israel:** No action has been taken or will be taken in Israel that would permit a public offering of the Securities or distribution of this sales brochure to the public in Israel. This sales brochure has not been approved by the Israel Securities Authority (the 'ISA'). Accordingly, the Securities shall only be sold in Israel to an investor of the type listed in the First Schedule to the Israeli Securities Law, 1978, which has confirmed in writing that it falls within one of the categories listed therein (accompanied by external confirmation where this is required under ISA guidelines), that it is aware of the implications of being considered such an investor and consents thereto, and further that the Securities are being purchased for its own account and not for the purpose of re-sale or distribution. This sales brochure may not be reproduced or used for any other purpose, nor be furnished to any other person other than those to whom copies have been sent.

Nothing in this sales brochure should be considered investment advice or investment marketing as defined in the Regulation of Investment Advice, Investment Marketing and Portfolio Management Law, 1995 ("the Investment Advice Law"). Investors are encouraged to seek competent investment advice from a locally licenced investment advisor prior to making any investment. State Street is not licenced under the Investment Advice Law, nor does it carry the insurance as required of a licensee thereunder.

This sales brochure does not constitute an offer to sell or solicitation of an offer to buy any securities other than the Securities offered hereby, nor does it constitute an offer to sell to or solicitation of an offer to buy from any person or persons in any state or other jurisdiction in which such offer or solicitation would be unlawful, or in which the person

making such offer or solicitation is not qualified to do so, or to a person or persons to whom it is unlawful to make such offer or solicitation.

**Italy Entity:** State Street Global Advisors Europe Limited, Italy Branch ("State Street Global Advisors Italy") is a branch of State Street Global Advisors Europe Limited, registered in Ireland with company number 49934, authorised and regulated by the Central Bank of Ireland, and whose registered office is at 78 Sir John Rogerson's Quay, Dublin 2. State Street Global Advisors Italy is registered in Italy with company number 11871450968 – REA: 2628603 and VAT number 11871450968, and its office is located at Via Ferrante Aporti, 10 - 20125 Milan, Italy. T: +39 02 32066 100. F: +39 02 32066 155.

**For Investors in Luxembourg:** The Companies have been notified to the Commission de Surveillance du Secteur Financier in Luxembourg in order to market their shares for sale to the public in Luxembourg and the Companies are notified Undertakings in Collective Investment for Transferable Securities (UCITS).

**For Investors in the Netherlands:** This communication is directed at qualified investors within the meaning of Section 2:72 of the Dutch Financial Markets Supervision Act (Wet op het financieel toezicht) as amended. The products and services to which this communication relates are only available to such persons and persons of any other description should not rely on this communication. Distribution of this document does not trigger a licence requirement for the Companies or SSGA in the Netherlands and consequently no prudential and conduct of business supervision will be exercised over the Companies or SSGA by the Dutch Central Bank (De Nederlandsche Bank N.V.) and the Dutch Authority for the Financial Markets (Stichting Autoriteit Financiële Markten). The Companies have completed their notification to the Authority Financial Markets in the Netherlands in order to market their shares for sale to the public in the Netherlands and the Companies are, accordingly, investment institutions (beleggingsinstellingen) according to Section 2:72 Dutch Financial Markets Supervision Act of Investment Institutions.

**For Investors in Norway:** The offering of SPDR ETFs by the Companies has been notified to the Financial Supervisory Authority of Norway (Finanstilsynet) in accordance with applicable Norwegian Securities Funds legislation. By virtue of a confirmation letter from the Financial Supervisory Authority dated 28 March 2013 (16 October 2013 for umbrella II) the Companies may market and sell their shares in Norway.

**For Investors in Spain:** State Street Global Advisors SPDR ETFs Europe I and II plc have been authorised for public distribution in Spain and are registered with the Spanish Securities Market Commission (Comisión Nacional del Mercado de Valores) under no.1244 and no.1242. Before investing, investors may obtain a copy of the Prospectus and Key Investor

Information Documents, the Marketing Memoranda, the fund rules or instruments of incorporation as well as the annual and semi-annual reports of State Street Global Advisors SPDR ETFs Europe I and II plc from Cecabank, S.A. Alcalá 27, 28014 Madrid (Spain) who is the Spanish Representative, Paying Agent and distributor in Spain or at [ssga.com](http://ssga.com). The authorised Spanish distributor of State Street Global Advisors SPDR ETFs is available on the website of the Securities Market Commission (Comisión Nacional del Mercado de Valores).

**For Investors in Switzerland:** This document is directed at qualified investors only, as defined Article 10(3) and (3ter) of the Swiss Collective Investment Schemes Act ("CISA") and its implementing ordinance, at the exclusion of qualified investors with an opting-out pursuant to Art. 5(1) of the Swiss Federal Law on Financial Services ("FinSA") and without any portfolio management or advisory relationship with a financial intermediary pursuant to Article 10(3ter) CISA ("Excluded Qualified Investors"). Certain of the funds may not be registered for public sale with the Swiss Financial Market Supervisory Authority (FINMA) which acts as supervisory authority in investment fund matters. Accordingly, the shares of those funds may only be offered to the aforementioned qualified investors and not be offered to any other investor in or from Switzerland. Before investing please read the prospectus and the KIID. In relation to those funds which are registered with FINMA or have appointed a Swiss Representative and Paying Agent, prospective investors may obtain the current sales prospectus, the articles of incorporation, the KIIDs as well as the latest annual and semi-annual reports free of charge from the Swiss Representative and Paying Agent, State Street Bank International GmbH, Munich, Zurich Branch, Beethovenstrasse 19, 8027 Zurich, or at [spdrs.com](http://spdrs.com), as well as from the main distributor in Switzerland, State Street Global Advisors AG ("SSGA AG"), Beethovenstrasse 19, 8027 Zurich. For information and documentation regarding all other funds, please visit [spdrs.com](http://spdrs.com) or contact SSGA AG.

**For Investors in the UK:** The Funds have been registered for distribution in the UK pursuant to the UK's temporary permissions regime under regulation 62 of the Collective Investment Schemes (Amendment etc.) (EU Exit) Regulations 2019. The Funds are directed at 'professional clients' in the UK (as defined in rules made under the Financial Services and Markets Act 2000) who are deemed both knowledgeable and experienced in matters relating to investments. The products and services to which this communication relates are only available to such persons and persons of any other description should not rely on this communication. Many of the protections provided by the UK regulatory system do not apply to the operation of the Funds, and compensation will not be available under the UK Financial Services Compensation Scheme.

**Investing involves risk including the risk of loss of principal.**

The whole or any part of this work may not be reproduced, copied or transmitted or any of its contents disclosed to third parties without SSGA's express written consent. The trademarks and service marks referenced herein are the property of their respective owners. Third party data providers make no warranties or representations of any kind relating to the accuracy, completeness or timeliness of the data and have no liability for damages of any kind relating to the use of such data. This document has been issued by State Street Global Advisors Europe Limited ("SSGAEL"), regulated by the Central Bank of Ireland. Registered office address 78 Sir John Rogerson's Quay, Dublin 2. Registered number 145221. T: +353 (0)1 776 3000. F: +353 (0)1 776 3300. ssga.com. SPDR ETFs is the exchange traded funds ("ETF") platform of State Street Global Advisors and is comprised of funds that have been authorised by Central Bank of Ireland as open-ended UCITS investment companies. State Street Global Advisors SPDR ETFs Europe I & SPDR ETFs Europe II plc issue SPDR ETFs, and is an open-ended investment company with variable capital having segregated liability between its sub-funds. The Company is organised as an Undertaking for Collective Investments in Transferable Securities (UCITS) under the laws of Ireland and authorised as a UCITS by the Central Bank of Ireland. **The information provided does not constitute investment advice as such term is defined under the Markets in Financial Instruments Directive (2014/65/EU) or applicable Swiss regulation and it should not be relied on as such. It should not be considered a solicitation to buy or an offer to sell any investment. It does not take into account any investor's or potential investor's particular investment objectives, strategies, tax status, risk appetite or investment horizon. If you require investment advice you should consult your tax and financial or other professional advisor. All information is from SSGA unless otherwise noted and has been obtained from sources believed to be reliable, but its accuracy is not guaranteed. There is no representation or**

**warranty as to the current accuracy, reliability or completeness of, nor liability for, decisions based on such information and it should not be relied on as such.**

All the index performance results referred to are provided exclusively for comparison purposes only. It should not be assumed that they represent the performance of any particular investment. ETFs trade like stocks, are subject to investment risk and will fluctuate in market value. The investment return and principal value of an investment will fluctuate in value, so that when shares are sold or redeemed, they may be worth more or less than when they were purchased. Although shares may be bought or sold on an exchange through any brokerage account, shares are not individually redeemable from the fund. Investors may acquire shares and tender them for redemption through the fund in large aggregations known as "creation units." Please see the fund's prospectus for more details. Concentrated investments in a particular sector or industry tend to be more volatile than the overall market and increases risk that events negatively affecting such sectors or industries could reduce returns, potentially causing the value of the Fund's shares to decrease. Select Sector SPDR Funds bear a higher level of risk than more broadly diversified funds. All ETFs are subject to risk, including the possible loss of principal. Sector ETFs products are also subject to sector risk and nondiversification risk, which generally results in greater price fluctuations than the overall market. Equity securities may fluctuate in value in response to the activities of individual companies and general market and economic conditions. Investing in foreign domiciled securities may involve risk of capital loss from unfavourable fluctuation in currency values, withholding taxes, from differences in generally accepted accounting principles or from economic or political instability in other nations. The views expressed in this material are the views of the SPDR EMEA Strategy & Research Team through the period ended 20 October 2021 and are subject to change based on market and other conditions. This document contains certain statements that may be deemed forward-looking statements. Please note that any

such statements are not guarantees of any future performance and actual results or developments may differ materially from those projected. This information should not be considered a recommendation to invest in a particular sector or to buy or sell any security shown. It is not known whether the sectors or securities shown will be profitable in the future. Standard & Poor's, S&P and SPDR are registered trademarks of Standard & Poor's Financial Services LLC (S&P); Dow Jones is a registered trademark of Dow Jones Trademark Holdings LLC (Dow Jones); and these trademarks have been licenced for use by S&P Dow Jones Indices LLC (SPDJ) and sublicenced for certain purposes by State Street Corporation. State Street Corporation's financial products are not sponsored, endorsed, sold or promoted by SPDJ, Dow Jones, S&P, their respective affiliates and third party licensors and none of such parties make any representation regarding the advisability of investing in such product(s) nor do they have any liability in relation thereto, including for any errors, omissions, or interruptions of any index.

**The information contained in this communication is not a research recommendation or 'investment research' and is classified as a 'Marketing Communication' in accordance with the Markets in Financial Instruments Directive (2014/65/EU) or applicable Swiss regulation. This means that this marketing communication (a) has not been prepared in accordance with legal requirements designed to promote the independence of investment research (b) is not subject to any prohibition on dealing ahead of the dissemination of investment research.**

**Please refer to the Fund's latest Key Investor Information Document and Prospectus before making any final investment decision. The latest English version of the prospectus and the KIID can be found at ssga.com.**

**A summary of investor rights can be found here: <https://ssga.com/library-content/products/fund-docs/summary-of-investor-rights/ssga-spdri-investors-rights-summary.pdf>.**

**Note that the Management Company may decide to terminate the arrangements made for**

**marketing and proceed with de-notification in compliance with Article 93a of Directive 2009/65/EC.**

Bonds generally present less short-term risk and volatility than stocks, but contain interest rate risk (as interest rates rise, bond prices usually fall); issuer default risk; issuer credit risk; liquidity risk; and inflation risk. These effects are usually pronounced for longer-term securities. Any fixed income security sold or redeemed prior to maturity may be subject to a substantial gain or loss.

A Smart Beta strategy does not seek to replicate the performance of a specified cap-weighted index and as such may underperform such an index. The factors to which a Smart Beta strategy seeks to deliver exposure may themselves undergo cyclical performance. As such, a Smart Beta strategy may underperform the market or other Smart Beta strategies exposed to similar or other targeted factors. In fact, we believe that factor premia accrue over the long term (5-10 years), and investors must keep that long time horizon in mind when investing.

Investments in small-sized companies may involve greater risks than in those of larger, better known companies.

Diversification does not ensure a profit or guarantee against loss.

Low volatility funds can exhibit relative low volatility and excess returns compared to the Index over the long term; both portfolio investments and returns may differ from those of the Index. The fund may not experience lower volatility or provide returns in excess of the Index and may provide lower returns in periods of a rapidly rising market. Active stock selection may lead to added risk in exchange for the potential outperformance relative to the Index.

The value style of investing that emphasises undervalued companies with characteristics for improved valuations, which may never improve and may actually have lower returns than other styles of investing or the overall stock market.

© 2021 State Street Corporation. All Rights Reserved. ID781638-3298245.8.1.EMEA.INST 1021 Exp. Date: 31/01/2022